



# ACSR

ARCASIA COMMITTEE ON  
SOCIAL RESPONSIBILITY

## COMPREHENSIVE SUMMERY of ACSR ACTIVITIES throughout 2024-25 TERM & OUTSTANDING MATTERS for records and handover

Ar. FARHANA SHARMIN EMU| ACSR Chair 2024-25  
DATE : 7 NOVEMBER ,2025



**ACSR ACTIVITIES**  
Throughout 2024-25 TERM

**ACSR CHARTER**

**Architecture with Marginalized  
Communities**

**Universal - Wellness Design**

**Thailand Workshop on  
Architecture with  
Marginalized Community**

**Publication of  
THE 2<sup>ND</sup> EDITION**

**KIRA –ACSR Forum  
“Social Outreach: Architects  
as Good Citizens”**

**Finalizing the UD+WD  
Students’ Design  
Competition**

**Maximize  
Accessibility and  
Engagement**

**IAP-ACSR Symposium  
“Beyond Buildings to  
Communities”**

**Reviewing and advancing  
the Architectural Wellness  
Design Guidelines**

**Compilation of projects  
from member institutes on  
marginalized communities**

# OUTSTANDING MATTERS

## For Records and Handover to incoming Chair

### ACSR CHARTER

Keep on Maximizing  
Accessibility and  
Engagement

### Architecture with Marginalized Communities

Proposal by IAI (Zone B) to host the  
**Youth Engagement & Knowledge  
Dissemination Phase** in  
collaboration with ACYA

Formation of taskforces for  
**Architecture with Marginalized  
Community Publication**

An informal Proposal from AAK to  
host an event for marginalized  
community

### Universal - Wellness Design

- **UD-WD Online Design  
Competition 2025-26**  
Theme: *Inclusive Futures:  
Equitable Spaces for All.*  
Awards at ARCASIA Forum  
23 (India, 2026).

**Taskforces formed for  
Architectural Wellness Design  
Guidelines**

# ACSR CHARTER

THE 2<sup>ND</sup> EDITION



ARCASIA

# CHARTER ON SOCIAL RESPONSIBILITY

November 2015

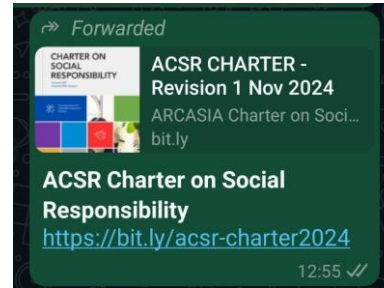
November 2024 - Revision 1



Promoting ethical and sustainable architectural practices



- ACSR Charter was officially launched during ARCASIA Council Meeting on 16 January 2025 in Colombo, Sri Lanka.
- The publication of the ACSR Charter aimed to encourage wider use of the document among ARCASIA members. To support this, ACSR implemented several promotional strategies throughout the term — including sharing QR codes, circulating the charter link across events and networks, and integrating it into our communication platforms — to maximize accessibility and engagement



# ACSR CHARTER

## THE 2<sup>ND</sup> EDITION



# ACSR CHARTER

THE 2<sup>ND</sup> EDITION

## MEMBERS OF ACSR CHARTER TASKFORCE

### ADVISORY TEAM

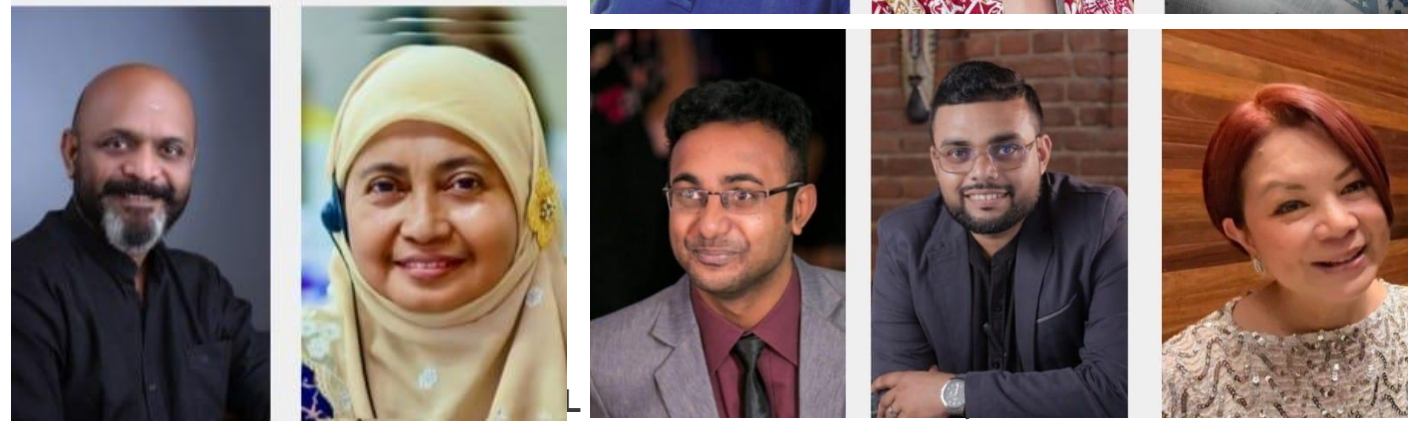
- Ar. Farhana Sharmin Emu, IAB - ACSR Chairperson 2024-2025
  - Ar. Dr. Joseph Kwan MH, HKIA - Advisor
  - Ar. Sudhir Balakrishnan, IIA - Advisor
- Ar. Dr. Norwina Mohd Nawawi, PAM – Advisor

### GRAPHIC TEAM

- Ar. Fawad Suhail Abbasi, IAP
- Ar. IDr. Mumtazah Mustajab, PAM
  - Ar. Primavera Desta, IAI

### CONTENT TEAM

- Ar. Abhishek Gupta, IIA
  - Ar. Nova Kristina, IAI
  - Ar. Preethi Agrawal, IIA
- Ar. Sakib Ahsan Choudhury, IAB
  - Ar. Sapumal Bandara, SLIA
  - Ar. Vanessa Ledesma, UAP



Architecture with  
Marginalized  
Communities

# Thailand Workshop



PRESENTERS

# ACSR Workshop on Architecture with Marginalized Communities

26th-29th April 2025  
Bangkok, Thailand

Organized by

The Association of Siamese Architects under Royal Patronage (ASA)  
&  
ARCASIA Committee on Social Responsibility (2024-2025)



### Site 01

Low-cost Micro Dwelling for Klomg-Toey Community

### Site 02

Baan Mankong Suan Phlu Sathorn Community

### Site 03

Bo Farang Housing for Low Income Individuals

### Site 04

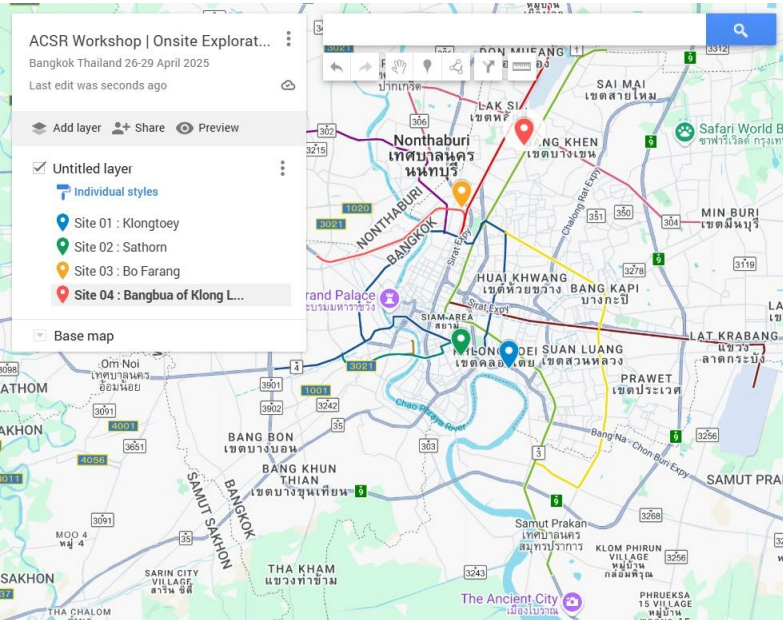
Klong Ladprao Community

ACSR Charter on Social Responsibility:  
<https://bit.ly/acsr-charter2024>

# THAILAND WORKSHOP

Organized by

The Association of Siamese Architects under Royal Patronage (ASA)  
&  
ARCASIA Committee on Social Responsibility (2024-2025)



**Site 01**  
Low-cost Micro Dwelling for Klong-  
Toey Community



**Site 02**  
Baan Mankong Suan Phlu  
Sathorn Community

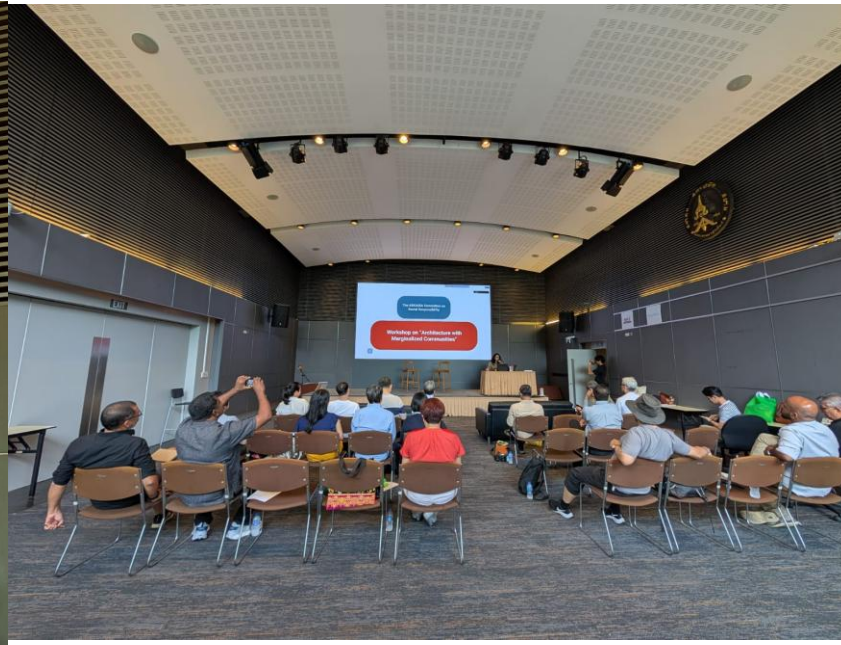


**Site 03**  
Bo Farang Housing for Low  
Income Individuals



**Site 04**  
Klong Ladprao Community

ACSR Charter on Social Responsibility:  
<https://bit.ly/acsr-charter2024>



**INTRODUCTION AT ASA OFFICE**



## Site 01: Klongtoey

### Positive Observations:

- The community demonstrates strong grassroots organization, resilience, and a self-help attitude, reflecting adaptability and potential for bottom-up planning.
- Informal economies and local engagement show capacity for sustaining livelihoods and building community responsibility, especially regarding environmental health.

### Negative Observations:

- Inadequate wastewater drainage leads to stagnant water, posing serious health risks.
- Lack of tenure security undermines long-term development.
- Limited architectural engagement reduces the potential for truly integrated and human-centric environments.
- Poor natural light and ventilation in some units diminish well-being.

### Recommendations / Comments:

- Promote **participatory design**, with architects as facilitators, ensuring housing reflects real needs and cultural identity.
- Embed **health and hygiene education** in the community, with models for trash collection and disposal drawn from successful case studies (e.g., Taiwan).
- **Redesign drainage systems** to eliminate stagnant water and improve health.
- Ensure **all units have 10% natural light** and proper cross-ventilation; adopt traditional designs to prevent the “hot box” effect.
- Encourage **cluster designs** over linear layouts to create shared green spaces and enhance social interaction.
- Introduce **public–semi-public–private transitions** in the layout to improve openness, friendliness, and informal surveillance.
- Enhance **tenure security**, financing options, and use of local materials.
- Build local capacity for **self-managed maintenance and upgrades**.
- Ensure the **continuity of community livelihoods** through mixed-use, income-generating spatial integration.
- Regular **Post-Occupancy Evaluation (POE)** to assess effectiveness and avoid repeated mistakes.



UPDATE FROM SITE 01



## Site 02: Sathorn

### Positive Observations:

- Demonstrates successful in-situ upgrading and integration of green public spaces, aligning with health and social wellbeing goals.
- Shows potential for Public-Private Partnership (PPP) models in urban renewal.

### Negative Observations:

- Risk of gentrification, rising land values, and eventual exclusion of original low-income residents.
- Insufficient natural lighting and ventilation, with some designs lacking adequate waste management and drainage.
- Community participation in planning appears more limited—planning seems top-down.

### Recommendations / Comments:

- Deepen **community-led action planning** to ensure inclusive and sustainable urban development.
- Implement **barrier-free, step-free ground-floor units** for elderly and disabled residents.
- Ensure **10% natural light and cross-ventilation** in all habitable spaces.
- Design inclusive systems that preserve **affordability** through micro-finance or rent-to-own schemes.
- Establish **Post-Occupancy Evaluations** to monitor not only physical infrastructure but also social wellbeing.
- Support **livelihood-generating infrastructure** and use canal or lake frontages to enhance communal and recreational spaces.
- Build a long-term vision that balances **infrastructure upgrading with community empowerment** and anti-displacement strategies.



UPDATE FROM SITE 02



### Site 03: Bo Farang

#### Positive Observations:

- The **land-sharing model** is an exemplary case of collaborative governance and innovation in urban housing.
- Residents participate in building efforts, contributing to sustainability and ownership.
- The project integrates green spaces and begins to utilize local natural resources.

#### Negative Observations:

- The negotiation process is lengthy and not fully inclusive of all community voices.
- Architectural expression lacks cultural depth, appearing overly utilitarian.
- Limited **barrier-free access** for the elderly and disabled.
- **Livelihoods of traditional occupations** may not be adequately preserved.

#### Recommendations / Comments:

- Promote a **more inclusive negotiation process** and document it for replication in other contexts.
- Bring **architectural sensibility as a cultural expression**—beyond just technical functionality.
- Include **step-free, wheelchair-accessible ground-floor units** and adaptable interior layouts.
- Conduct **Post-Occupancy Evaluations** to refine the process and ensure alignment with resident needs.
- Support **mixed-use and income-generating zones** to protect traditional economic practices.
- Utilize natural features (canals, lakes) to create **community recreational hubs** and strengthen social life.



**UPDATE FROM SITE 03**



**Site 04: Bangbua of Klong Ladprao**

**Positive Observations:**

- The site stands out as a model for **climate-resilient canal-side upgrading**, with organized layout and strong institutional backing.
- Emphasis on public space and green areas supports social engagement and environmental health.

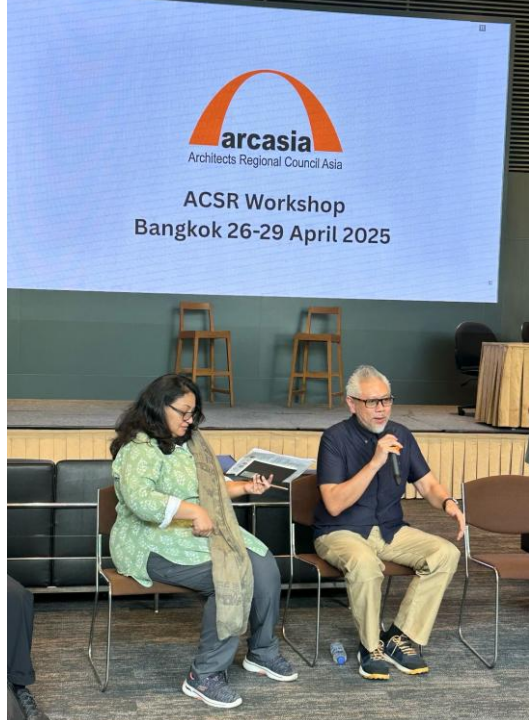
**Negative Observations:**

- Social fragmentation has been observed post-resettlement; some residents feel disconnected from the new setting.
- Uniform design approach does not reflect the **diversity of household structures and economic needs**.
- **Inadequate POE mechanisms** limit feedback for improvement.

**Recommendations / Comments:**

- Design spaces that support **cultural continuity and economic livelihood** (e.g., markets, communal workspaces).
- Ensure adequate **natural light and ventilation** in all rooms.
- Provide **barrier-free access** in ground-floor units and adapt designs for multigenerational use.
- Use the site as a **pilot for scalable, adaptive, and inclusive resettlement**—incorporate POEs to inform future policies.
- Organize **community fire drills** with special attention to elderly and vulnerable populations.
- Strengthen **community governance structures** to support participatory upgrades and post-resettlement cohesion.

**UPDATE FROM SITE 04**



**PANEL DISCUSSION & CERTIFICATE**

## Architecture with Marginalized Communities

This initiative marks a critical step towards building a more inclusive and socially conscious architectural community under the ARCASIA umbrella.

1. **Human-centered** → dignity, identity, health, opportunity.
2. **Bottom-up** → community voices, empathy in design.
3. **Health & hygiene** → education, drainage, waste.
4. **Inclusive access** → elderly, differently abled, resettlement.
5. **Housing as empowerment** → beyond shelter, culture, economy.
6. **Post-occupancy feedback** → learn–improve–adapt.
7. **Capacity-building** → livelihoods, social ties, continuity.
8. **Natural assets** → site features, resilience, quality of life.
9. **Build Back Better** → not just structures, but communities and futures.

**PHASE ONE**  
**On-site Exploration**  
April 26-29 ,2025

This phase has provided participants with direct, immersive experiences into the work of **architects in Thailand** who are engaged with marginalized communities.

Attendees has explored **methodologies, design processes, and the tangible social impacts** of community- centered architectural practices.

**PHASE TWO**  
**Knowledge Sharing**  
June -August ,2025

Upon returning to their home countries, participants will connect with local architects involved in similar work from their context.

They will gather case studies, methodologies, and community impacts to be shared in an online platform. This phase aims to build a **knowledge base and foster a transnational network of architects working with marginalized communities.**

↓  
**E- PUBLICATION**

**PHASE THREE**  
**Youth Engagement and Knowledge Dissemination**

The final phase will aim to involve young architects, preferably through the **ACYA (ARCASIA Committee of Young Architects)**, in spreading the acquired knowledge.

This will help raise awareness, inspire interest, and nurture a new generation of socially responsible architects across the region.

## Architecture with Marginalized Communities

### KIRA –ACSR Forum ARCASIA ACA-21

# “Social Outreach: Architects as Good Citizens”

**Date & Time:** Friday, 12 September 2025 | 16:00–17:30 (KST, GMT+9)  
**Venue:** Songdo Convensia, Incheon, Republic of Korea

THE 21<sup>st</sup> ASIAN CONGRESS OF ARCHITECTS - INCHEON



## SOCIAL OUTREACH

: ARCHITECTS AS GOOD CITIZENS

### MODERATOR



**Ar. Farhana Shamin Emu (IAB)**  
ACSR Chair

### SPEAKER



**Ar. Kasama Ploy Yamtree(ASA)**  
Senior Architect / Openspace



**Ar. Seung Yeal YOU(KIRA)**  
President / AA Architects & Associates

### PROGRAM

The current state and evolution of community-based architecture across Asia, key case studies and methodologies that are shaping impact, how ACSR and member institutes can support, include, and uplift community architects, how we can inspire the next generation of socially engaged architects and so on.

**Date & Time** Friday, 12 September 2025 | 16:00–17:30 (KST, GMT+9)

**Venue** Songdo Convensia, Incheon, Republic of Korea

1. Opening Address (By Saifuddin Ahmad, ARCASIA President)
2. Session Introduction (By Farhana Sharmin Emu (IAB), Chairperson, ACSR 2024–25)
3. Barry Will Award Segment
4. Best Practice Presentations from Asia  
By KASAMA Ploy Yamtree, Senior Community Architect, Openspace Collaborative Group (Thailand)
5. KIRA Presentation  
By Ar. Seung Yeal You, Past chair of International Relations Committee, KIRA / President of AA Architects & Associates
6. Open Forum & Q&A
7. Concluding Remarks

· Open to ARCASIA & KIRA members, students of architecture and design, and the general public  
· Free entry | No prior registration required



**Website** <https://aca-21.kr>

**E-mail** [aca21.arcasia@gmail.com](mailto:aca21.arcasia@gmail.com)

Korea Institute  
of Registered Architects

Incheon  
Metropolitan City

## KIRA –ACSR Forum

### Barry Will Award Segment

This award is dedicated to honoring architects who have made truly outstanding contributions in the field of social responsibility



### Best Practice Presentations from Asia

Showcasing community-based architectural projects with marginalized groups  
by **KASAMA Ploy Yamtree**, Senior Community Architect



### KIRA Presentation

Institute initiatives and contributions to social responsibility  
by **Ar. Seung Yeal You**, Past chair of International Relations Committee, KIRA /President of AA Architects & Associates



# KIRA –ACSR Forum



# KIRA –ACSR Forum



arcasia  
Architects Regional Council Asia

제21차 인천 아시아건축사대회  
THE 21<sup>st</sup> ASIAN CONGRESS OF ARCHITECTS - INCHEON

## Forum

Forum 1  
**Young Architects Exchange - Emerging Voices of Asia**  
Session 1 / Anupam Deb, Suttahathai Niyomwax, Kohel Hoysabhi-Ataman, Leo Euf Jung, Lee Chang Kyi & Kang Jung yoon  
Session 2 / Salman Javed Malik, Rachel Tan, Fung, Shuk Kwan Gabriel, Hyun Seung-hun, Chung Heek & Hong Jin-pyo

Forum 2  
**Social Outreach - Architects as Good Citizens**  
Jo Seung-yoo, Kazana Ploy Yamree

2021  
A BETTER  
ASIAN

안녕 감사합니다.  
그리고 모두가 2층에서 열리는 우정의  
초대합니다. 아주 멋진 뷔페가 제공될  
다.  
모두를 위해, 모두가 포함되며, 아무도  
되지 않습니다.  
조금 넘게

# Architecture with Marginalized Communities

## IAP-ACSR Symposium “Beyond Buildings to Communities”



### IAP+ACSR-SYMPOSIUM

ARCHITECTURE WITH MARGINALIZED COMMUNITIES:  
REDEFINING ARCHITECTURE –  
BEYOND BUILDINGS TO COMMUNITIES



Zoom Registration

DECEMBER 7TH 2025, 2:30 PM - 5:30 PM  
GENERAL HALL A, IAPEX 2025, LAHORE, PAKISTAN



ACSR Charter Document

# PUBLICATION of COUNTRY REPORTS PRESENTATIONS

## ARACSIDA HKIA Architecture with Marginalized Community – Yu Pok Road Light Public Housing

**YU POK ROAD LIGHT PUBLIC HOUSING**  
 玉泊路光輝公共房屋

**PROJECT DESCRIPTION**

This project is a public housing development located in the Yu Pok Road area of Hong Kong. It is designed to provide affordable housing for the community, featuring modern architecture and a central courtyard. The building is a multi-story structure with a mix of residential units and community facilities.

**COMMUNITY SERVICES AND PUBLIC AMENITIES**

**DESIGN CONCEPT**

The design concept focuses on creating a vibrant and inclusive community. It includes a central courtyard with green spaces, playgrounds, and community facilities. The layout is designed to promote social interaction and a sense of belonging among residents.

## 'Manchar Lake Mohannas: Safeguarding the Last Surviving Houseboat Village from Extinction'

Prof. Dr. Anila Naem, Heritage Cell, Department of Architecture and Planning, N.E.D, University, Karachi. Cultural Protection Fund, British Council.

The project aimed to restore the unique cultural heritage of the houseboat-dwelling Mohanna fishing community residing on Manchar Lake, Pakistan.

The project focused on addressing critical socio-economic needs and challenges identified as necessary for survival of their cultural heritage traditions; such as the restoration of deteriorating houseboats, improving community infrastructure, and fostering economic opportunities.



## Let's cocreate our neighbor

Platform of Community Action and Architecture |

This process was initiated in 2020 at Gabati City Bangladesh. It is a community-led initiative to address the needs of a low-income urban settlement. In collaboration with UNHCR, and funding from the ACHR-S, the project engaged residents in participatory design to improve living conditions.



## SHAM SUNG LIGHT HOUSING

Light Housing is a unique Social Enterprise founded in 2001, specifically aimed at assisting short-term impoverished households. It aims to provide an integrated mechanism that encourages citizens, whether waiting for public housing to rely more on themselves and actively pursue upward mobility. Apart from providing affordable housing, it also acts as a coach, offering personalized orientation and guidance to help beneficiaries achieve their goals.

Light Housing is an innovative housing project that explores making effective use of underutilized real estate resources. In 2014, LWK & Partners had the opportunity to engage in the project to revitalize an old quarter for factory workers into a residential community specifically designed for families with children at Sham Sung area. As the design architect, LWK started the refurbishment with a focus on the building facade. The new colour scheme introduced a vibrant and cheerful atmosphere with harmony with the surrounding greenery. The quarter units were renovated with individual bedrooms, kitchen and balcony. Quaintly households were matched based on the backgrounds and offered with a 3-year tenancy plan. To enhance the social network and inter-household communication, communal spaces are specially designed on ground floor, roof and common room in this project.



**COLLECTIVE RELOCATION SETTLEMENT**  
 A MODEL OF PEOPLE-DRIVEN RECONSTRUCTION ON POST-TSUNAMI 2018

**Project Background**

Located in coastal area of Palu, Central Sulawesi, this settlement is prone to natural and climate disaster. Despite many disaster records such as 2018 Donggala's earthquakes and tsunami, survivors with their high Mojanggan spirit have demonstrated resilience by collectively rebuilding their lives through mutual cooperation.

**Kampung Mamboro's Issue**

Kampung Mamboro is located on the coastal area, and the majority of its residents work as fishermen and fish processors.

In 2018, a 7.5 magnitude earthquake and 10-meter tsunami struck, Kampung Mamboro Perikanan was among the settlements affected by the disaster.

Survivors were required to relocate, but the relocation site provided by the government was far from the coastline and the majority of survivors did not want to move on to the site.

Through a participatory process, survivors measured a safe distance from the red zone free of settlements (SDZ) for their new settlements area.

**Co-Development and Construction**

Housing development was managed by community through a task-group for builder teams, material distribution, and women's management roles. Community working produce some material construction such as bricks, pre-fabricated concrete panels, and timber frames.

**Co-Design**

Survivors designed typologies based on needs: bonded houses for vulnerable groups such as the elderly and women and still houses for productive families. The architectural design of earthquake resistant house integrates ventilated wooden stilt houses with modern pre-fabrication technology.

**Design with People**

**Co-Planning**

Through the GALS approach, the community created a kampung map, vision, action plans, and a 3D model of their final kampung. These became advocacy tools for government engagement and a basis for post-disaster development.

**Co-Design**

Survivors designed typologies based on needs: bonded houses for vulnerable groups such as the elderly and women and still houses for productive families. The architectural design of earthquake resistant house integrates ventilated wooden stilt houses with modern pre-fabrication technology.

**Co-Development and Construction**

Housing development was managed by community through a task-group for builder teams, material distribution, and women's management roles. Community working produce some material construction such as bricks, pre-fabricated concrete panels, and timber frames.

**Co-Design**

Survivors designed typologies based on needs: bonded houses for vulnerable groups such as the elderly and women and still houses for productive families. The architectural design of earthquake resistant house integrates ventilated wooden stilt houses with modern pre-fabrication technology.

**COMMUNITY LEARNING CENTRE KUALA LUMPUR**

An initiative by the Kuala Lumpur City Hall, the 5-storey learning centre houses communal spaces for the disadvantaged children & adults to obtain skills training such as reading, carpentry, sewing, etc. conducted by the invited trainers & local NGOs.

Systemic disadvantage	
Exclusion	Vulnerability
<p><b>GENERAL INFORMATION</b></p> <p>Completed Location: 2019 Kuala Lumpur, Malaysia</p> <p>Users: Children &amp; adults falling behind in mainstream education, dropouts, from poverty &amp; societal issues.</p> <p>Capacity: 250-300 persons</p> <p>Developer: Kuala Lumpur City Hall</p> <p>Proprietor: Kuala Lumpur City Hall</p> <p>Typology: 5-storey adaptive reuse shoplot</p> <p>Awards:</p>	
<p><b>BUILDING PROGRAMME</b></p> <p>Occupancy: Daily operation hours from 9am-6pm (excluding public holidays)</p> <p>Forms of assistance:                     <ul style="list-style-type: none"> <li>Education modules (formal &amp; informal)</li> <li>Training equipments &amp; instruments</li> <li>Teaching facilities &amp; library</li> <li>Peer support group</li> </ul> </p> <p>Programmes:                     <ul style="list-style-type: none"> <li>Classroom lessons</li> <li>Skill training &amp; bonding operations</li> <li>Engagement activities with local communities &amp; NGOs</li> <li>Occasional market for the learners to sell their handmade products</li> </ul> </p>	

**SOLUTION IDEAS**

Parents of children with disabilities often avoid bringing them to playgrounds due to feelings of alienation and a lack of community understanding, which are significant barriers to inclusion. However, when children are given access to inclusive spaces, they feel respected and encouraged, becoming more active and fostering social interaction, understanding, and friendship. Play and recreation are crucial for promoting the well-being and integration of people with disabilities by changing both how others perceive them and how they perceive themselves. True social inclusion depends on providing equal opportunities and ensuring everyone is respected and accepted. A key feature of an inclusive playground is that all children can participate, not just a specific group. Designing a playground for only one type of disability leads to segregation, which is the opposite of inclusion.

**A Safety Net of Innovative Land Tenure Solutions for Near-landless Sharecroppers and for a Greener Rural Nepal**

Marginalized communities worldwide face systemic land insecurity, inadequate housing, and growing climate risks.

**Adequate Housing**  
 Land tenure security is fundamental for right to adequate housing

**Climate Vulnerability**  
 Communities with insecure land tenure are often the most vulnerable to climate impacts.

**Land Tenure in Nepal**

- Root cause of extreme poverty/inequality
- 25% of the pop. lives with (near) landlessness, limiting housing security.
- 57.3% of pop. dependent on agriculture, yet half of this pop. are near-landless
- Causes land degradation, blocks agricultural innovation and Other Land Uses

**Integrated Solutions**  
 Land Tenure Security + Climate-Smart Agriculture (CSA) + Sustainable Land Management

**L4ACT Project Outcome**

- Improved tenure security for near-landless indigenous communities, emphasizing gender and youth inclusivity
- Enhanced access to sustainable livelihoods and green economic opportunities for these communities
- Plan and promote sustainable, climate smart and inclusive land use.

Prepared for ACAZI with

**CSR project to new shelter house**

1. Organize a meeting with experts, therapists, local parents and children with disabilities to attend a consultation meeting at the Temple of Literature to assess the current situation and come up with design ideas suitable for the play needs of children, especially children with disabilities.

2. Installed a playground at the Temple of Literature with the support of Dong Do Association of People with Disability and funding from UNICEF and the New Zealand Embassy.

3. Carry out regular playground maintenance and repairs with stakeholders (local authorities, sponsors,...).

Occupants:	<ul style="list-style-type: none"> <li>Domestic violence survivors</li> <li>Other forms of gender based violence &amp; exploitation including migrant workers.</li> </ul>
Capacity:	24 women & their children
Architect:	Ventus Architects Sdn. Bhd.
Proprietor:	WAO Malaysia
Typology:	2.5-storey adaptive reuse: 1980s bungalow house
Awards:	PAM Awards 2022 (Silver) SDG & Adaptive Reuse categories.
<b>BUILDING PROGRAMME</b>	
Occupancy:	Temporary
Forms of assistance:	<ul style="list-style-type: none"> <li>Accommodation, food, clothing &amp; toiletries</li> <li>Financial assistance to leaving the shelter to start a new life &amp; children's educational needs.</li> <li>Legal information, referrals to lawyers.</li> <li>Counsellings, job search &amp; placements.</li> <li>Counselling &amp; peer support group sessions.</li> </ul>
Programmes:	<ul style="list-style-type: none"> <li>Social works</li> <li>Recreational &amp; educational activities for children.</li> <li>Job skills training.</li> </ul>

# PUBLICATION of COUNTRY REPORTS PRESENTATIONS

## ARACSLA HKIA Architecture with Marginalized Community – Yau Pok Road Light Public Housing

**項目簡介 PROJECT DESCRIPTION**

**社區服務和公共設施 COMMUNITY SERVICES AND PUBLIC AMENITIES**

**設計概念 DESIGN CONCEPT**

## Let's cocreate our neighborhood Platform of Community Action and Architecture (POCAA)

This process was initiated in 2020 at Gabtoli City Colony, Dhaka, Bangladesh. It is a community-led initiative to address housing challenges in a low-income urban settlement in collaboration with Grameen Shiksha Urban Committee, and funding from the ICDF-Selawig Foundation. The project engaged residents in participatory design and construction to improve living conditions.

Community-led mapping, architectural documentation, co-design workshops, community-led material procurement and construction led to building homes for 20 vulnerable families in the Gabtoli community.

Image (top): Architect's research of people's dwelling, everyday possession etc led to defining the space requirement by the families.

Image (Left): Gabtoli, on the map of Dhaka City.

Section: Understanding the settlement and its relationship within (homes, shops, bazaars, school etc) and beyond (proximity to highway, bus terminal etc).

Image (Bottom, left): Activity of community saving group 'Shepia boost unrayan samiti', which led the process of community management.

Image (Bottom, right): Community member 'Sazada' discussing her house design option with model to her family members and the reason they hired.

## SHAM TSENG LIGHT HOUSING

Light Be is a unique Social Enterprise founded in 2010, specifically aimed at assisting short-term impoverished households. It aims to provide an integrated mechanism that encourages citizens, whether waiting for public housing, to rely more on themselves and actively pursue upward mobility apart from providing affordable housing. It also acts as a coach, offering personalized orientation and guidance to help beneficiaries achieve their goals.

Light Housing is an innovative housing project that explores making effective use of underutilized real estate resources. In 2014, LWK & Partners had the opportunity to engage in this project to revitalize an idle quarter for factory workers into a residential community specifically designed for families with children in Sham Tseng area. As the design architect, LWK started the refurbishment with a focus on the building facade. The new colour scheme introduces a vibrant and cheerful atmosphere with harmony with the surrounding greenbelt. The quarter units were renovated with individual bathrooms, kitchen and balcony. Qualified households were matched based on the backgrounds and offered with a 3-year tenancy plan. To enhance the social network and inter-household communication, communal spaces are specially designed on ground floor, roof and common rooms in this project.



**LWK + PARTNERS**

**UN-HABITAT**

### A Safety Net of Innovative Land Tenure Solutions for Near-landless Sharecroppers and for a Greener Rural Nepal

Marginalized communities worldwide face systemic land insecurity, inadequate housing, and growing climate risks.

**Securing Land, Securing Futures**

- **Target:** landless households, mainly indigenous communities
- **Project Area:** 4 municipalities (Lamahi, Gadhawa, Rapti, Rajpur), Dang district, Lumbini Province, Nepal

**Adequate Housing**  
Land tenure security is fundamental for Right to adequate housing

**Climate Vulnerability**  
Communities with insecure land tenure are often the most vulnerable to climate impacts.

**Land Tenure in Nepal**

- Root cause of extreme poverty/inequality
- 25% of the pop. lives with (near) landlessness, limiting housing security.
- 57.3% of pop. dependent on agriculture, yet half of this pop. are near-landless
- Causes land degradation, blocks agricultural innovation and Other Land Uses

**Integrated Solutions**  
Land Tenure Security + Climate-Smart Agriculture (CSA)

**L4ACT Project Outcome**

- Improved tenure security for near-landless indigenous communities, emphasizing gender and youth inclusivity
- Enhanced access to sustainable livelihoods and green economic opportunities for these communities
- Plan and promote sustainable, climate smart and inclusive land use.

**Dang District**

Co-funded by: **UNEP**, **UN Women**, **UN Women**, **UN Women**, **UN Women**

Prepared for ACAZI with support from **UNEP**

Country Presentations – 16 member institutes shared projects with marginalized communities, leading to a taskforce for publication.

## TASKFORCE FOR PUBLICATION

ZONE A – IAP / IIA / SLIA

ZONE B – ASA / PAM

ZONE C - HKIA

# Universal - Wellness Design

UD-WD Students' Design Competition 2025 – finalizing theme *“Inclusive Futures: Equitable Spaces for All”* and timeline.

ACSR\_ACAE CROSS-COMMITTEE ROUND TABLE (CCRT MEETING 2023) 1 & 2 DECEMBER 2023, BRUNEI



This proposed collaboration aims to leverage ACAE's expertise in architectural education and ACSR's focus on social responsibility to create a meaningful learning experience for architectural students and future young architects.

**Universal Design for Adaptive Reuse (UDAR) in Society**  
Saturday, 2nd December 2023  
9AM - 11AM  
Lecture Theatre, Universiti Teknologi Brunei

**Architects' Sustainable Social Responsibilities**

**Ar. Thomas Cheung**  
Chairperson of the ARCASIA  
Committee on Social Responsibility (ACSR)

Architects being the leaders of our building industry are responsible on the planning, design and construction of our built environment. Architects need to integrate different sustainable design to create quality space for the well-being of our community.

Under numerous complicated changing factors nowadays such as climate changes, digitization and automation, old district renewal, rural urbanization, changing demographics, waste management, etc. happening around us, architects should find the way to implement their social responsibilities in a sustainable way to maintain our community friendly-living.

**Universal Design: Architecture for All Enhancing Accessibility and Quality of Life**

**Adjunct Prof. Ar. Adrianta Aziz**  
ACAЕ Chairman  
PAM Deputy President

Universal Design is the guiding philosophy that extends beyond accessibility for people with disabilities in architecture. It emphasizes that true beauty and comfort in our living spaces can only be achieved if everyone, regardless of age, ability, or any demographic, can move freely and perform essential tasks independently. This concept, also known as inclusive design, focuses on making the built environment, products, and spaces accessible to all individuals.

Universal Design has its roots in broader accessibility movements and incorporates aesthetics seamlessly into the core considerations. In essence, it simplifies and enriches life, promoting health and friendliness for everyone, reducing stigma, and leveling the playing field for people with disabilities. Universal Design is truly Architecture for All.

Student Member	FREE
PUJA Member	BND 30
Non-PUJA Member	BND 40

To register, simply scan  
+2 CPD/CPE Points

Promoting Awareness | Improving Knowledge | Enhancing Experience



UPDATE FROM TASKFORCE B

**Universal - Wellness Design**



**Students' Online Design  
Competition**

## **Students' Online Design Competition**

***Inclusive Spaces of the Built Environment Students' Design Ideas Competition 2025-26***

**Theme : Inclusive Futures: Equitable Spaces for All**

**Timeline : Award and Presentation at ARCASIA Forum in India in September 2026 .**

**Aim :** Inspire awareness and empathy through a creative, practical design challenge that nurtures inclusive thinking for real-world spatial challenges.

**Objectives : Promote Design Excellence** – Encourage innovative, sustainable design.

**Educational Experience** – Hands-on exposure to real-world issues.

**Community Impact** – Foster social inclusion through design.

**Professional Development** – Recognition and visibility for students.

**Collaboration: ACSR & ACAE**

# Universal - Wellness Design



## Students' Online Design Competition

### Competition Details:

#### 1. Eligibility

- Open to all students of ARCASIA member institutes (individual or groups of max 5).

#### 2. Site Options

Option 1: Renovate/enhance an existing public space or facility.

Option 2: Propose a new inclusive public facility.

#### 3. Design Criteria: Designs must prioritize the following:

1. Accessibility & Universal Design / 2. Cost-effectiveness
3. Sustainability / 4. Community Impact & Innovation.

#### 4. Jury Members (7 members)

3 ACSR representatives (incl. ACSR Chairperson)

2 ACAE representatives (incl. ACAE Chairperson)

2 external experts (architecture/urban planning/sustainability)

# Universal - Wellness Design

## Architectural Wellness Design Guidelines –

reviewed draft and formed  
taskforce to develop it further.



**ACSR**  
ARCASIA COMMITTEE ON  
SOCIAL RESPONSIBILITY

ARCHITECTS REGIONAL COUNCIL ASIA (ARCASIA) LTD. - Co. Regn. No. 202018286H  
SECRETARIAT 2024-2025 PAM Centre, 95L, Jalan Tandok, Bangsar, 59100 Kuala Lumpur, MALAYSIA  
T +603-22022866 F +603-22022566 E [arcasia@arcasia.org](mailto:arcasia@arcasia.org) / [secretariat@arcasia.org](mailto:secretariat@arcasia.org) / [www.arcasia.org](http://www.arcasia.org)

Ref : ARC24-25/ACSR/COR/IAB/250328  
Date: 28 March, 2025

**ACSR EMAIL TO:**  
Presidents of ARCASIA Member  
Institutes:  
Zone A: BIA, IAB, IAP, IIA, SLIA, SONA  
Zone B: AAK, ALACE, AMA, ASA, IAI,  
PAM, PUJA(B), SIA, UAP, VAA  
Zone C: AAM, ASC, HKIA, JIA, KAU,  
KIRA, UMA

**CC:**  
ARC President + OBs + CCs

**Subject: Request to share Universal Design Guidelines, Wellness Design Guidelines and any other Guidelines incorporating Universal Design or Wellness Design, as adopted in your country/state.**

**Esteemed Presidents of ARCASIA Member Institutes,**  
Greetings from ACSR ARCASIA Committee on Social Responsibility!

The ACSR Committee of ARCASIA is dedicated to promoting and advancing Universal Design and Wellness Design principles in architectural practice across Asia. In line with this objective, we propose to compile a comprehensive repository of Universal Design and Wellness Design Guidelines from all ARCASIA member institutes.

### Rationale

**The purpose of this initiative is to establish a shared pool of design guidelines to serve as a reference for all member institutes. By gathering these documents, we can create a resource that enables members to:**

- Access best practices in Universal and Wellness Design from different regions.
- Support member countries that do not yet have formalized guidelines by providing reference materials.
- Learn from each other's experiences to improve architectural design and potentially influence government policies.
- Encourage inclusivity, awareness, and the adoption of these essential design principles.



**MEMBER INSTITUTES** | ANM • Architects Association of Macau | ALACE • Association of Lao Architects and Civil Engineers | ANMA • Association of Myanmar Architects | ASIA • The Association of Siamese Architects under Royal Patronage | ASIO • The Architectural Society of China | BIA • The Bhutan Institute of Architects | HKIA • The Hong Kong Institute of Architects | IAB • Institute of Architects Bangladesh | IAI • Institut Arsitek Indonesia | IAP • The Institute of Architects Pakistan | IIA • The Indian Institute of Architects | JIA • The Japan Institute of Architects | KAU • Architects Union of Korea | KIRA • Korea Institute of Registered Architects | PAM • Pertubuhan Arkitek Malaysia | PUJA • Pertubuhan Uluks Junutera & Arkitek | SIA • Singapore Institute of Architects | SLIA • Sri Lanka Institute of Architects | SONA • The Society Nepalese Architects | UAP • United Architects of the Philippines | UMA • The Union of Mongolian Architects | VNA • Vietnam Association of Architects



### Objective

The goal of this compilation is to create a collaborative database of regional, national, and local-level policies and guidelines related to Universal Design and Wellness Design, as well as any other design guidelines incorporating relevant clauses.

### Expected Outcomes

- Architects across ARCASIA member countries will gain insight into various strategies and concerns addressed by different governments and institutions.
- Member institutes will have access to a shared reference document, which can assist in developing and refining their own guidelines.
- Countries without existing Universal Design and Wellness Design regulations can use these references to advocate for the introduction and establishment of such policies.

### Request for Submission

We kindly request each member institute to share copies of the following:

- Universal Design Guidelines (if available)
- Wellness Design Guidelines (if available)
- Any other relevant design guidelines that include provisions related to Universal Design or Wellness Design.

**Soft copies of these documents may be uploaded at [provide link or email address for submission].**

We appreciate your cooperation and look forward to your valuable contributions.

For any clarification, please feel to communicate (WhatsApp contact: +8801819263248).  
Thank you for your kind cooperation and support.

Best regards,

Farhana Sharmin Emu  
Committee Chair ACSR 2024-2025  
ARCASIA Committee on Social Responsibility



Ar. Farhana Sharmin Emu  
Committee Chair ACSR  
2024-2025



# Universal - Wellness Design

## Composing Architectural Wellness Awareness Design Guidelines

**Guidelines** - To collectively formulate Best Practice Wellness Design Guidelines.

**Awareness** - To arouse awareness of healthy building design and user-centric concern in architectural and urban planning design for higher quality of design value.

**Inspiration** - To compose inspiration for architects to develop design principles to match their project needs and context.

**Promotion** - To promote non-statutory base best practice as a design tool to architectural design students and practising architects as a manual with wellness design inspirations.

### PROCESS

- To formulate draft guidelines and review among member institutions.
- To organize Forum for external idea.
- To consolidate the final version to be launched in **ACA-21**.



# Architectural Wellness Design Guideline

## TASKFORCE FOR ARCHITECTURAL WELLNESS DESIGN GUIDELINE

Led by

Ar. Franky CHOI HKIA &

Ar. Archana KHANNA IIA

ZONE A – IAP / IIA

ZONE B – PAM / SIA

ZONE C – AAM / HKIA / UMA



제21차 인천 아시아건축사대회

THE 21<sup>st</sup> ASIAN CONGRESS OF ARCHITECTS - INCHEON

ACSR COMMITTEE MEETING

ARCASIA

Committee on Social Responsibility (ACSR)

ARCASIA 사회적책임위원회

H21  
A BETTER TOMORROW





# ACSR

ARCASIA COMMITTEE ON  
SOCIAL RESPONSIBILITY

THANK YOU

