



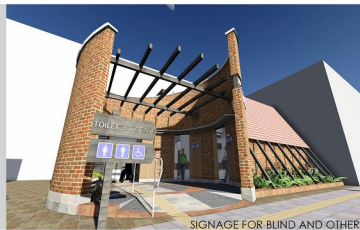
FRONT VIEW



ENTRY VIEW



VIEW OF TOILET WITH GREEN SPACE



SIGNAGE FOR BLIND AND OTHERS



TACTILE FOR BLIND & SIGNAGE AT ENTRY



WOODEN PERGOLAS ABOVE ENTRY FOYER



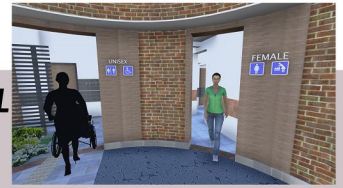
NICHES AT WALL, LANDSCAPE, & LOWERED SCREEN



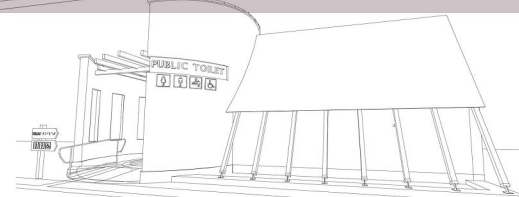
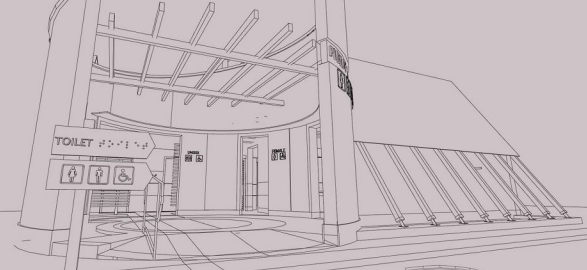
ENTRY VIEW WITH TACTILE TILE, RAMP, RAILING, FLOORING PATTERN & LANDSCAPE



ENTRY WAYS AND SIGNAGE FOR UNISEX, MALE, FEMALE THROUGH ROUND ENTRY FOYER



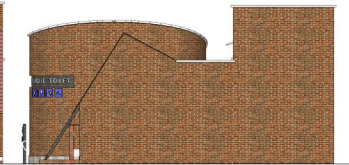
"UNIVERSAL DESIGN" - PUBLIC TOILET FOR ALL



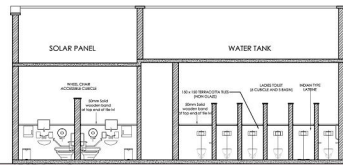
LOUVERED SCREEN AND SERVICE STAIR TO ROOF



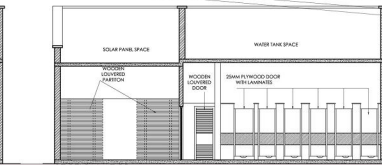
SOUTH ELEVATION



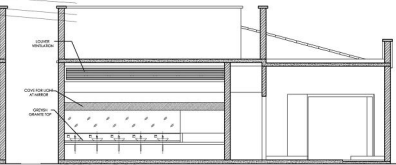
EAST ELEVATION



SECTION AT AA



SECTION AT BB



SECTION AT CC

