



PR14AR24

SITE

SITE JUSTIFICATION

1. MAXIMUM PUBLIC FLOW AMONG THREE DURBAR SQUARES
2. LOCATED NEARBY THE PUBLIC SQUARE

PUBLIC TOILET DESIGN

LOCATION: GANGAPATH, BASANTAPUR DURBAR SQUARE
AREA: 117 SQUARE METER

DESIGN PRINCIPLES

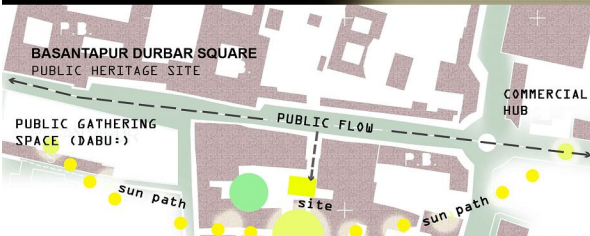
1. EQUITABLE IN USE
2. FLEXIBILITY IN USE
3. SIMPLE AND INTUITIVE
4. PERCEPTIBLE INFORMATION
5. TOLERANCE FOR ERROR
6. LOW PHYSICAL EFFORT
7. SIZE AND SPACE FOR APPROACH AND USE

DESIGN OBJECTIVE

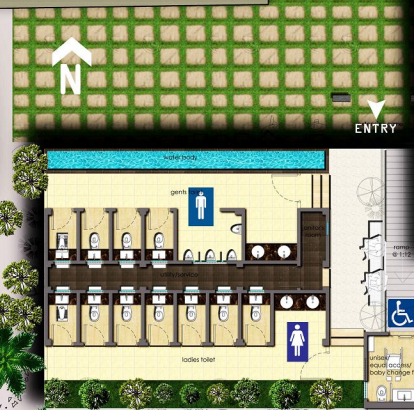
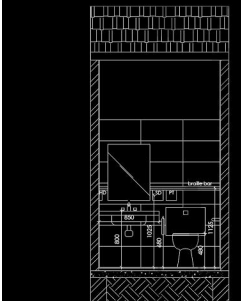
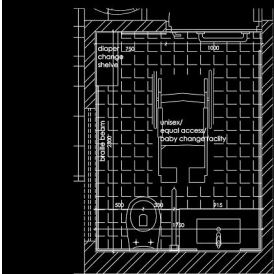
-TO DESIGN A PUBLIC TOILET WITH 16 PEOPLE CAPACITY THAT SHOULD BE ACCESSIBLE BY ALL KINDS OF PEOPLE OF DIFFERENT AGE, ABILITY, GENDER AND CULTURAL BACKGROUND



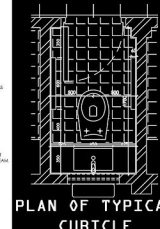
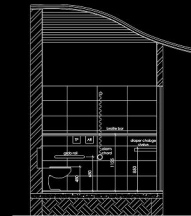
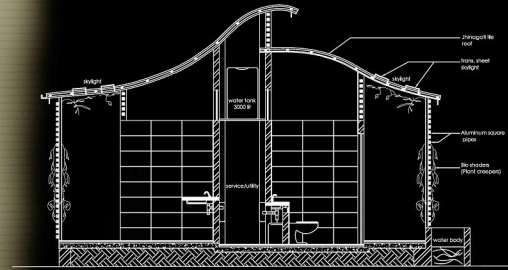
LOCATION MAP



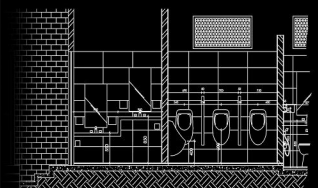
SITE ANALYSIS



MASTER PLAN



PLAN OF TYPICAL CUBICLE



DETAIL SECTION OF CUBICLE, URINAL AND WASH BASIN