

# **SOCIETY OF NEPALESE ARCHITECTS (SONA)**

## **ESG REPORT 2024**

15<sup>th</sup>-16<sup>th</sup> January 2025, Colombo

Sri Lanka

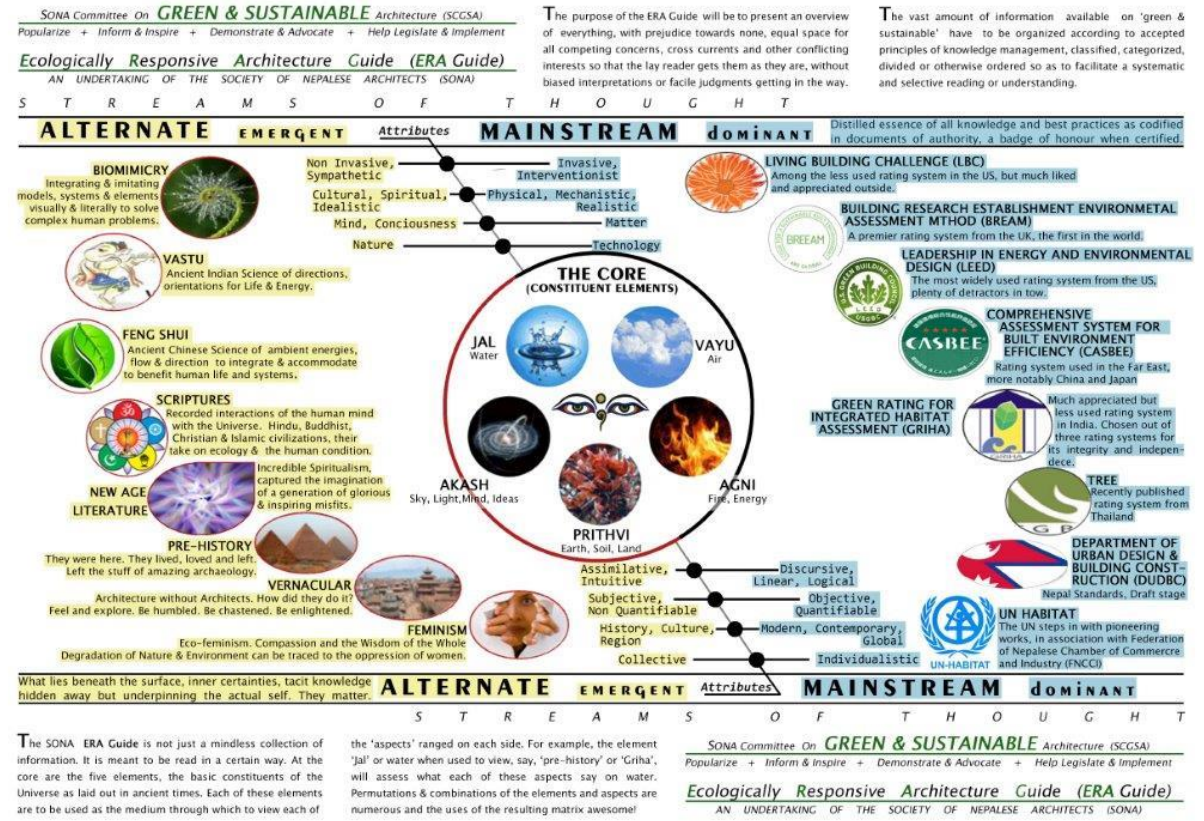
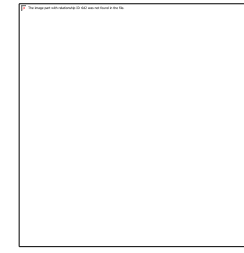
# SONA'S ESG Involvement

## 1. Environment Practices (E)

Society of Nepalese Architects (SONA) has been working on improving the environment specially working to lower the carbon footprints from the building sector.

### 1.1 SONA's advocacy for ERA guide

Through this research and advocacy efforts, coupled with the development of the Green Building Guideline, there is a possibility of a comprehensive Green Rating System for Nepal.

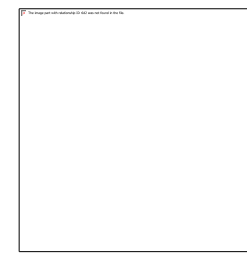


# SONA'S ESG Involvement

## 1. Environment Practices (E)

### 1.2 Green Building Guidelines of Nepal

- The Green Building Guideline Nepal is a comprehensive set of standards and recommendations for sustainable design and construction practices in the country.
- Developed through a collaborative effort between the Department of Urban Development and Building Construction (DUDBC), the World Bank, the SCGSA under SONA, the guideline aims to promote environmentally responsible and energy-efficient building practices in Nepal.

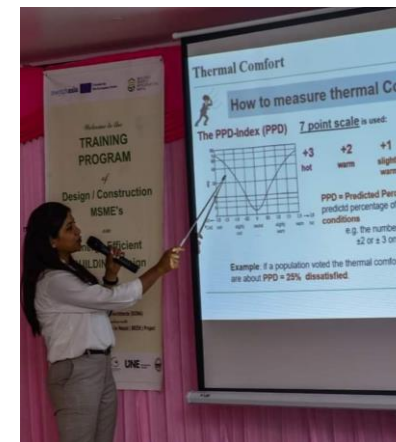
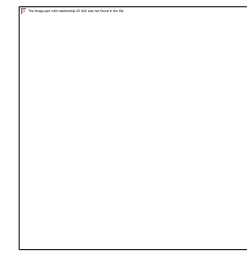


# SONA'S ESG Involvement

## 1. Environment Practices (E)

### 1.3 Building Energy Efficiency in Nepal (BEEN) Training Programs:

- Society of Nepalese Architects (SONA) in collaboration with BUILDING Energy Efficiency in Nepal (BEEN), a project funded by European Union under the Switch Asia Grant Program conducted a 3day training program in energy efficiency in buildings.
- The Training was conducted in three different provinces on the concept of energy efficiency, parameters and strategies of Energy Efficient Building Design, and the enhancement of skills for architects and engineers in creating energy-efficient building designs



# SONA'S ESG Involvement

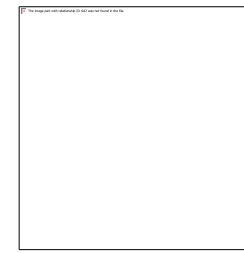
## 1. Environment Practices (E)

### 1.4 Workshop on Earth Bag Construction

- This collaboration reflects the shared commitment of two organizations dedicated to sustainable building practices.

### 1.5 Sustainable Architecture Lectures

- Topics included green practices, emergency architecture, and sustainable designs for mountain regions



# SONA'S ESG Involvement

## 2. Social Practices (S)

### 2.1 Inclusivity and Accessibility

- Gender-Inclusive Architectural Design Workshops in various architecture schools to teach architecture students principles of inclusivity



15<sup>th</sup> Jan, 2025, Colombo Sri Lanka

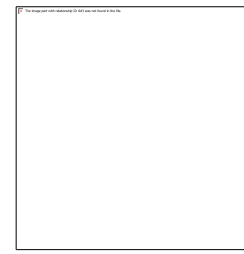




# SONA'S ESG Involvement

## 2. Social Practices (S)


### 2.2 SONA-NFDN Workshops on Universal Design

- Society of Nepalese Architects joined hands with National Federation of the Disabled Nepal (NFDN) on educating architecture students about Universal Design which is very integral






   
राष्ट्रिय अपांडु महासंघ नेपाल  
**NFD-N**  
National Federation of the Disabled - Nepal (NFDN)  
in association with  
Society of Nepalese Architects (SONA)  
presents

**Capacity Building Workshop for Architecture Students on UNIVERSAL DESIGN**  
*"A Comfortable Place for all"*



Himalaya College of Engineering, 29<sup>th</sup> June, 12:00 P.M. Onwards

Supported By:  
SONA Committee on Social Responsibility (SCSR)  
SONA Committee on Architecture Education (SCAE)

# SONA'S ESG Involvement

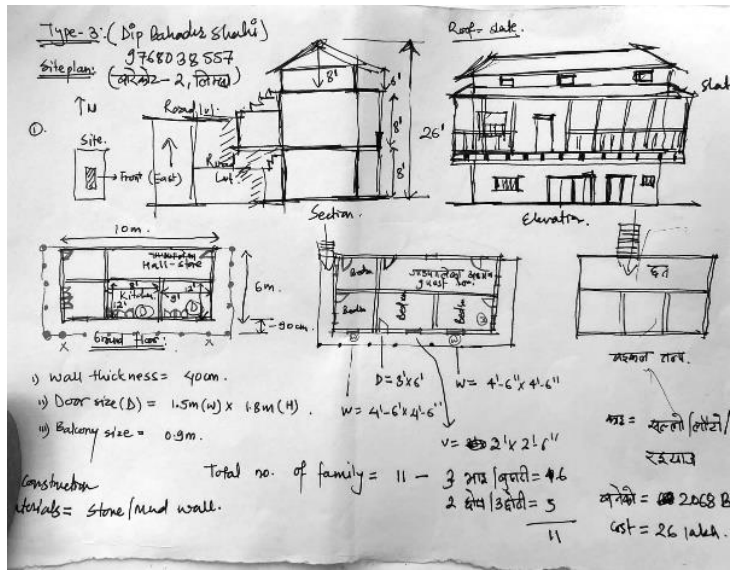
## 2. Social Practices (S)

### 2.3 Disaster Response and Community Support

- *Response to Jajarkot Earthquake:* Provided emergency shelter and support to affected communities through SONA's Social Responsibility Committee



**ARCASIA**  
FORUM 22  
COLOMBO - SRI LANKA



15<sup>th</sup> Jan, 2025, Colombo Sri Lanka

# SONA'S ESG Involvement

## 2. Social Practices (S)

### 2.4 Promotion of Equity in Architecture

- *Public Exhibition:* This public exhibition initiation by SONA is to bring awareness among the public about architecture, who architects are and what really is the difference between architects and engineers



# SONA'S ESG Involvement

## 2. Social Practices (S)

### 2.5 MOU with architecture schools

- Established collaborations to enhance education standards, research, and internships

### 2.6 SONA Thesis of the Year Award

- Recognized innovative ideas from architecture students.



# SONA'S ESG Involvement

## 3. Governance Practices (G)

### 3.1 Advocacy for Professional Ethics and Regulation

- *Establishment of the Architects' Council: Advocacy for a separate governing body to regulate and safeguard architecture profession and professionals*



**ARCHBUILD EXPO 2024**  
PANEL DISCUSSION on  
"THE DESIGN PRACTICE: Relevance, Resources & Results"

Organized by **uia** and **arcasia**

**MODERATOR**

- AR. ALEX SHRESTHA**  
Managing Director  
Wonyu & Associates
- AR. PRABAL THAPA**  
Founder of Prabal Thapa Architects  
Member of Alternative Construction  
(Architectural, Technical, University, Vendors)
- AR. ARUN DEV PANTA**  
Founder/Partner  
Omni Ltd.

**PANELIST**

- AR. PRAJWAL HADA**  
Founder of Prajwal Hada Associates  
Lecturer at Tribhuvan University  
Member in Urban Planning
- AR. SUJATA TULADHAR**  
US Green Building Council - Leadership in Energy and  
Environmental Design (LEED AP)  
LEED Accredited in Building Design and Construction  
LEED AP-IBD + CI

SESSION BY  
Society of Nepalese Architects  
15TH EXECUTIVE COMMITTEE

5<sup>th</sup> DECEMBER, 2024  
VENUE: BHRIKUTI MANDAP  
TIME: 11:30 TO 13:00

ORGANIZED BY **GB** and **A**

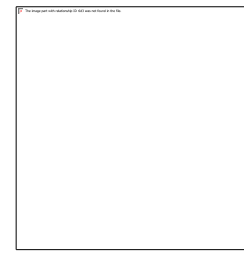


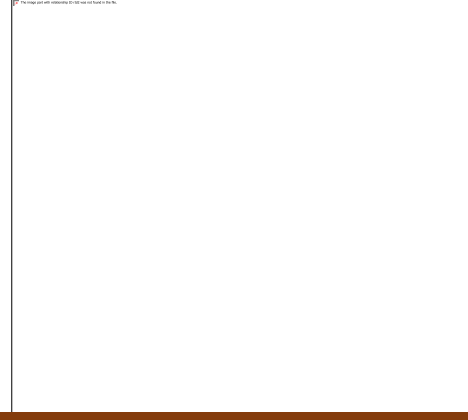
# SONA'S ESG Involvement

## 3. Governance Practices (G)

### 3.2 Promotion of Architectural Standards

- *SONA Excellence Awards*: Recognized outstanding contributions in various architectural categories, promoting high professional standards.





Long live ARCASIA!

THANK YOU

DHANYABAD

धन्यवाद