

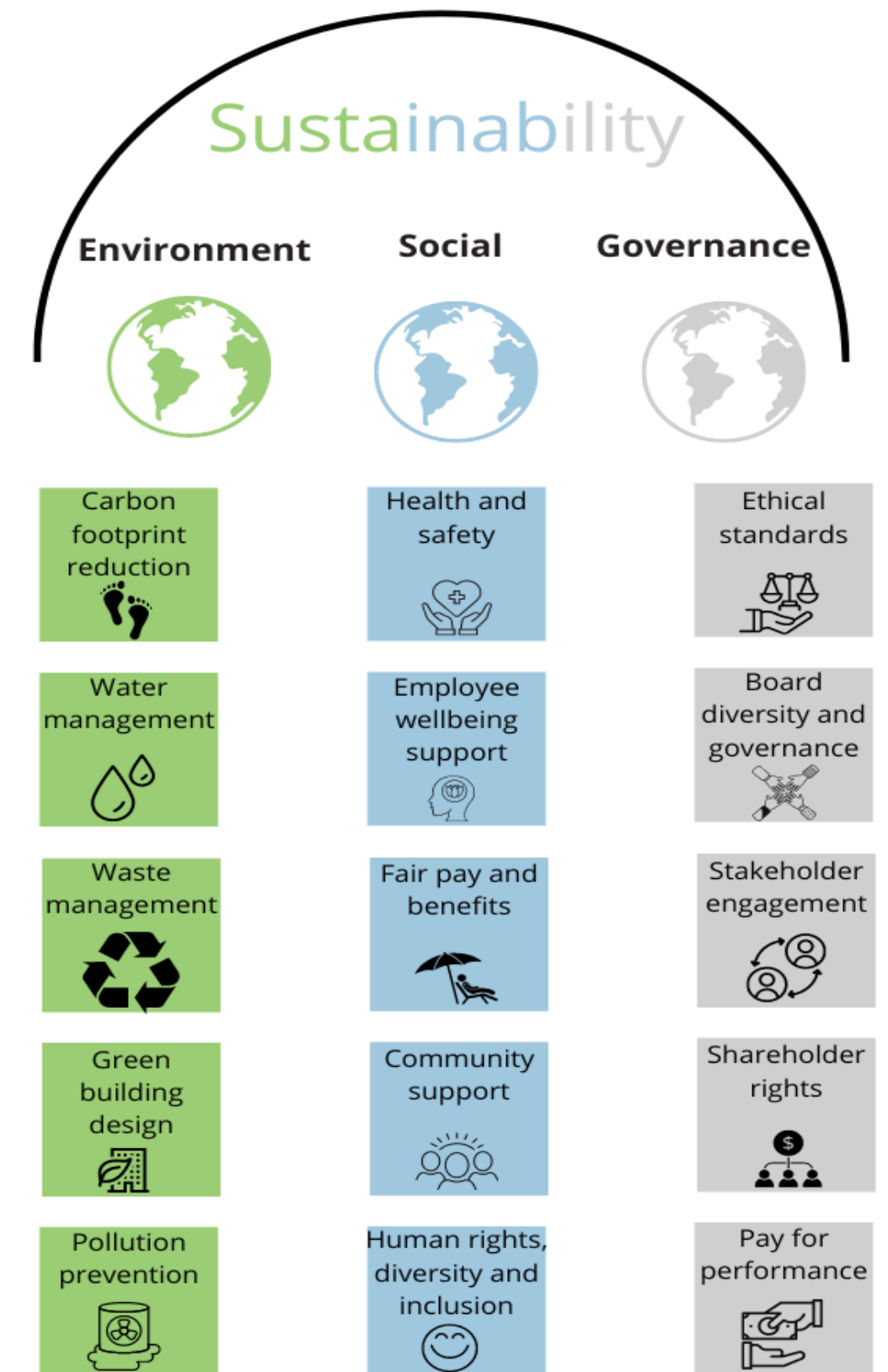
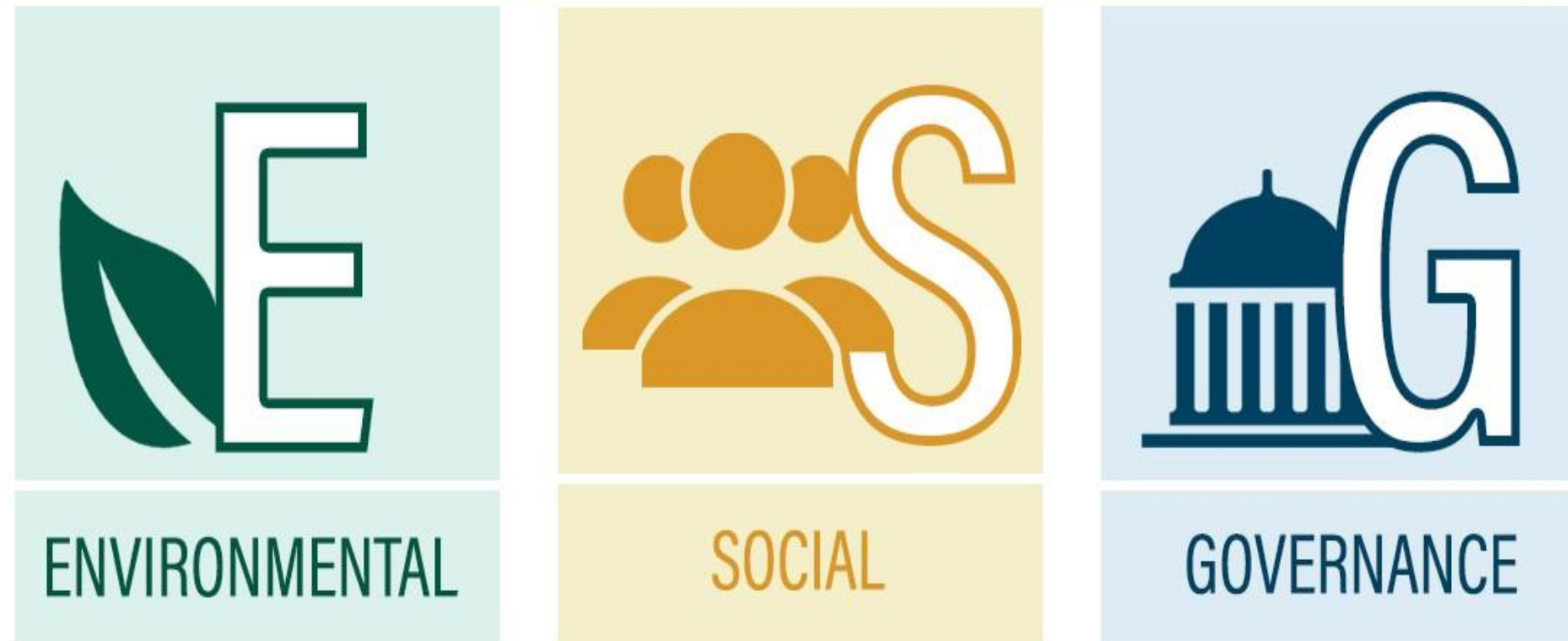
IMPLEMENTATION OF ESG

BY INDIAN ARCHITECTS IN THEIR PRACTICES



ESG-ENVIRONMENTAL, SOCIAL & GOVERNANCE

- A FRAMEWORK USED TO EVALUATE THE SUSTAINABILITY & ETHICAL IMPACT OF AN ORGANIZATION.
- IT LOOKS AT HOW A COMPANY MANAGES ITS RISKS & OPPORTUNITIES RELATED TO ENVIRONMENT, SOCIAL & GOVERNANCE FACTORS.





PRINCIPLES OF



By embracing ESG principles, architects can play a crucial role in creating a more sustainable, equitable, and resilient built environment for future generations.

ENVIRONMENTAL CONSIDERATION

A wide range of considerations aimed at minimizing the negative impact of the built environment on the planet.

- ENERGY EFFICIENCY
- SUSTAINABLE MATERIALS
- WATER CONSERVATION
- WASTE REDUCTION

- By designing energy-efficient and environmentally friendly buildings, architects can help reduce greenhouse gas emissions and combat climate change.
- Sustainable practices help conserve natural resources like water, energy, and materials.
- Environmentally conscious designs can lead to improved building performance, such as better indoor air quality and increased occupant comfort.



SOCIAL

CONSIDERATION

A wide range of considerations aimed at creating a positive social impact through the built environment



COMMUNITY ENGAGEMENT



HEALTH & WELL-BEING



INCLUSIVE DESIGN



CULTURAL SENSITIVITY



- By considering the social impact of their designs, architects can help create buildings and communities that improve the quality of life for all residents.
- Engaging with the community throughout the design process can lead to stronger community relationships
- Buildings that address social needs can create significant social value, such as improved health outcomes, reduced social isolation.



**Supported Health
and Wellbeing**



GOVERNANCE

CONSIDERATION

A wide range of factors that ensure ethical and responsible business practices.

- Ensuring that all materials and construction practices are ethically sourced and comply with labor and environmental regulations
- Ensuring that all projects comply with local laws, regulations, and industry standards related to sustainability and social responsibility.
- Maintaining open communication with clients, contractors, and community members to foster trust and collaboration



ETHICAL PRACTICES



COMPLIANCE & STANDARDS



STAKEHOLDER ENGAGEMENT



CONTINUOUS IMPROVEMENT



CHALLENGES

The escalating climate crisis has made sustainable design a necessity, not just a preference. Architects are under increasing pressure to minimize the environmental impact of their projects.

- Sustainable materials and technologies can often be more expensive upfront compared to traditional options.
- Access to sustainable and locally sourced materials can be limited in some regions, particularly in developing countries.



HIGHER INITIAL COST



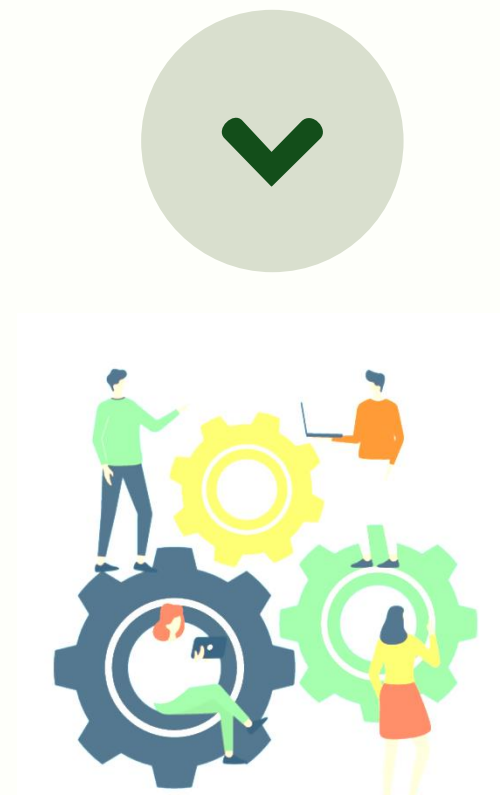
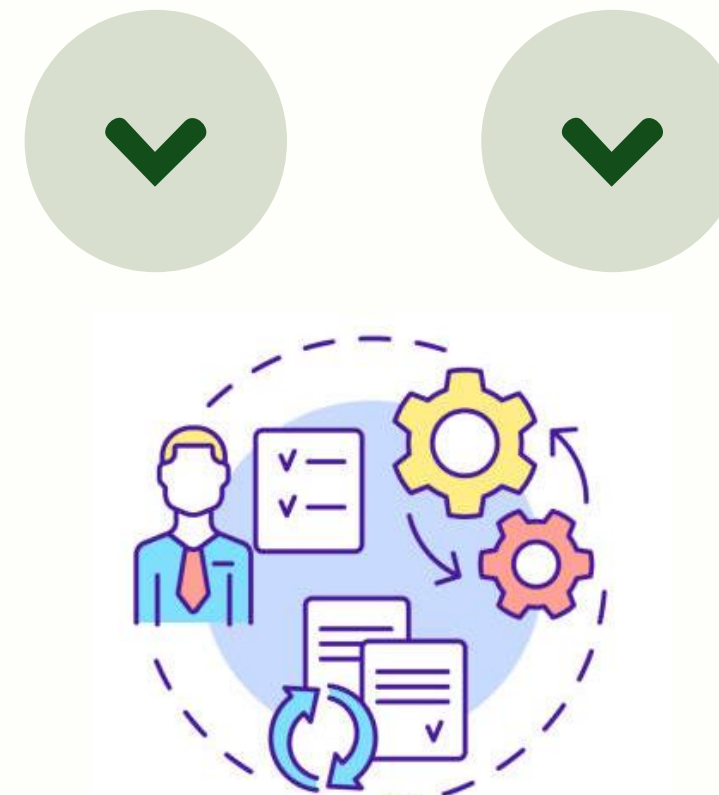
LIMITED AVAILABILITY



REGULATIONS COMPLEXITY



RESISTANCE TO CHANGE



OPPORTUNITIES

By embracing ESG principles, architects can create buildings that are not only aesthetic and functional but also sustainable, equitable, and resilient.

- Integrating sustainable technologies and strategies can lead to more unique and inspiring designs.
- Green building certifications and ESG credentials can make projects more attractive
- By addressing environmental and social risks early in the design process, architects can help mitigate potential legal and reputational risks for their clients



INNOVATION & CREATIVITY



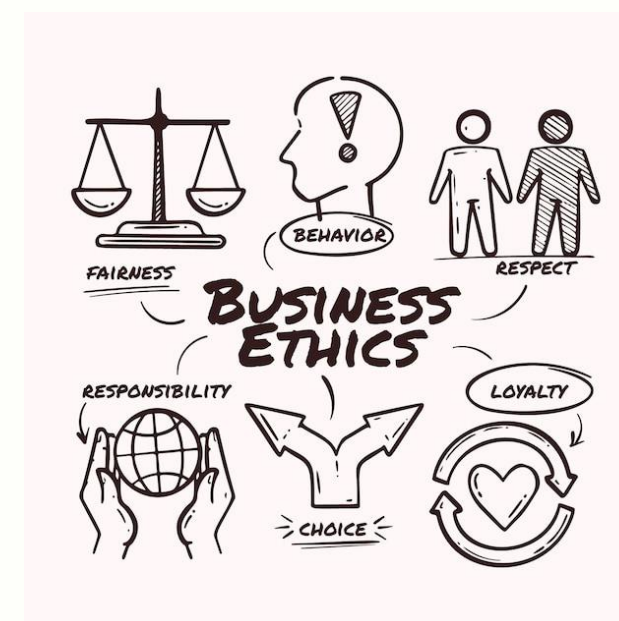
**IMPROVED PROJECT
OUTCOMES**

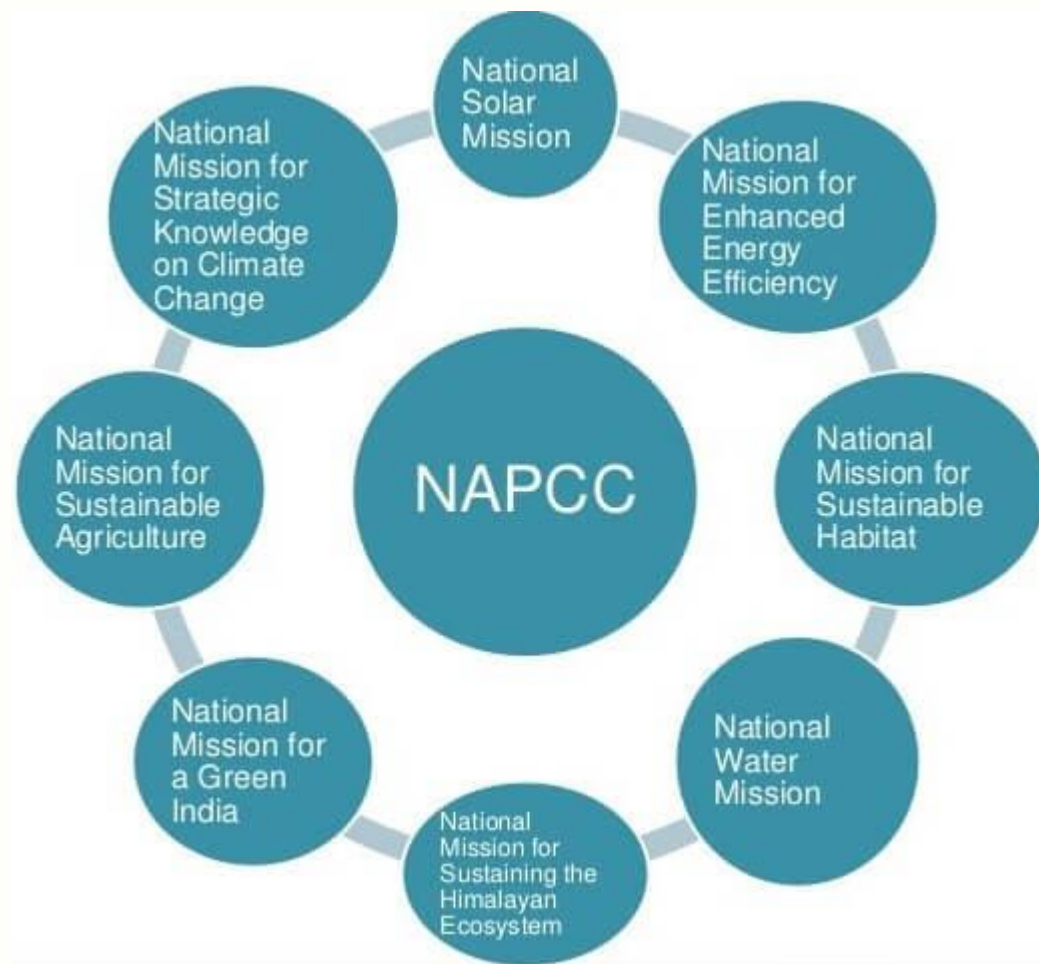


FUNDING & RESOURCES



MITIGATING RISKS





INDIAN GOVERNMENT POLICIES & INITIATIVES

In the current landscape of sustainable architecture, the industry's unwavering dedication to ESG principles is vividly evident. Certifications like LEED (Leadership in Energy and Environmental Design), IGBC (Indian Green Building Council) and GRIHA (Green rating for Indian Habitat Assessment) have solidified their positions as the preferred Indian standards for assessing a building's sustainability.



➤ ENVIRONMENTAL POLICIES

➤ SOCIAL POLICIES

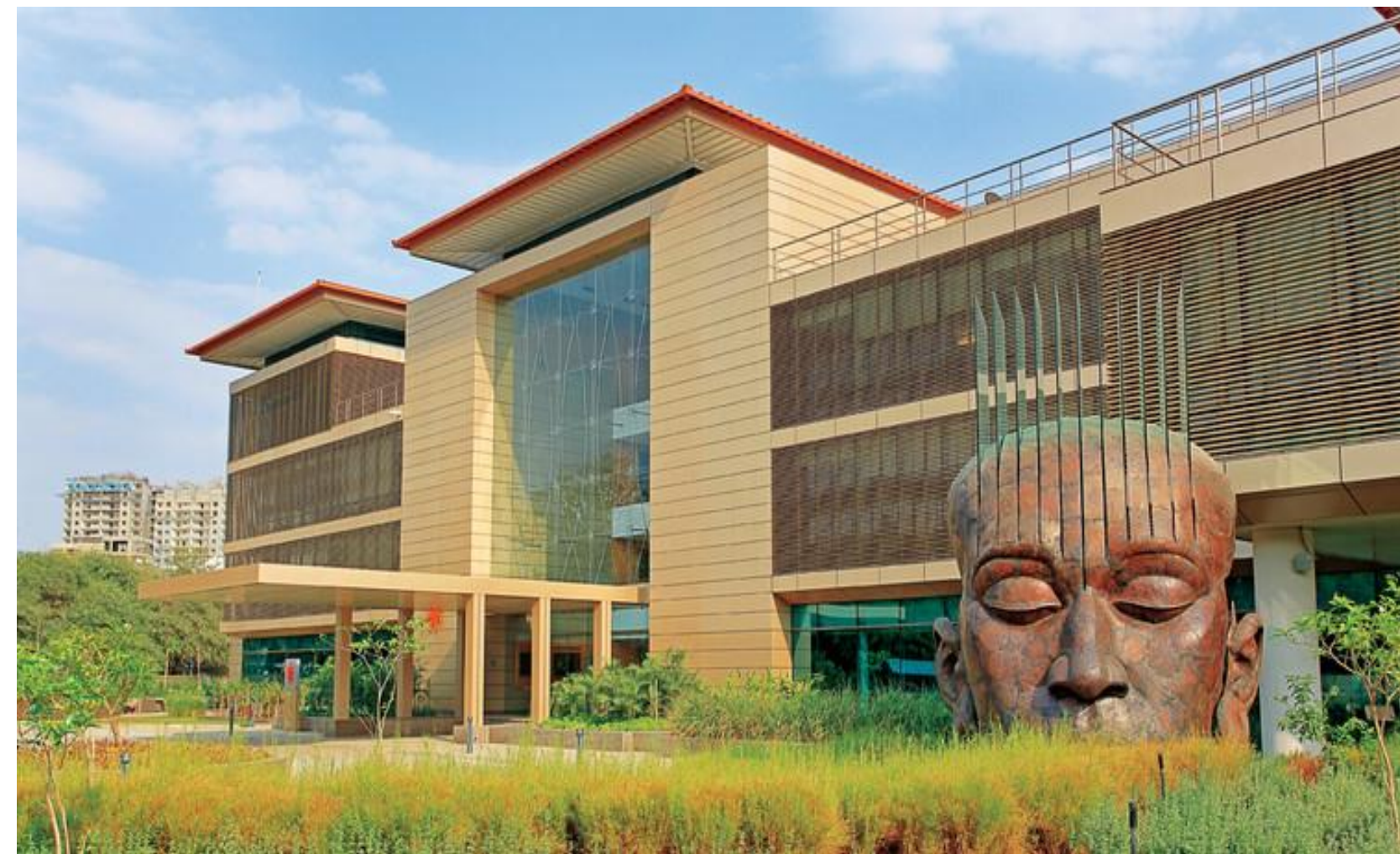
➤ GOVERNANCE & CORPORATE SOCIAL RESPONSIBILITY

➤ GREEN INITIATIVES

IMPLEMENTING ESG IN ARCHITECTURAL PRACTICES

- CASE EXAMPLES:
- SUZLON ONE EARTH, PUNE
- CII-SOHRABJI GODREJ, HYDERABAD
- GODREJ ONE, MUMBAI





SUZLON ONE EARTH

ONE OF THE GREENEST CORPORATE CAMPUS

LOCATION: PUNE, INDIA

It is the eco-friendly, self-sufficient headquarters of the company. The campus is spread across 10 acres and is completely powered by renewable energy, including hybrid wind turbines, solar panels and photovoltaic cells.



SUZLON ONE EARTH

Suzlon One Earth is a LEED Platinum and GRIHA 5 - star certified building. It is divided into five interconnected, individual buildings that are aptly named after the elements of nature – Sun, Aqua, Sky, Tree and SEA.

Through sustainable practices like rainwater harvesting, on-site waste conversion and an 'Office in Garden' design to maximize daylight use, Suzlon One Earth successfully reduces its operating cost by 35%



● ● ● ● ●

CII-SOHRABJI GODREJ

LOCATION: HYDERABAD, INDIA

CII-Sohrabji Godrej announced itself as a 'Net-Zero Energy' Platinum-rated building, with the goal of improving year after year. The Green Business Centre earned a LEED rating of 56 credits and became certified LEED Platinum.

Building Management Systems (BMS) are installed for real-time monitoring of energy consumption by ventilation, lighting, power systems, etc. The green roof covers more than 50% of the roof area and serves a dual purpose by Earth sheltering to reduce heat loss and help maintain a steady indoor air temperature





GODREJ ONE

LOCATION: MUMBAI, INDIA

Godrej One is the signature building within The Trees, a mixed-use development. It features a range of sustainable initiatives, including rainwater harvesting, solar panels, and a green building management system. It also prioritizes the use of recycled and locally sourced materials.





● ● ● ● ●

GODREJ ONE

Godrej One has been awarded the prestigious IGBC Platinum ranking under the category of IGBC Health and Wellbeing rating system.

Site premises has multiple green spill out spaces, which are accessible to all employees



THANK YOU!



PRESENTED BY:

- AR. VILAS AVCHAT

(President IIA)

-AR. TUSHAR SOGANI

(Jr. Vice – President IIA)

