

# COUNTRY REPORT 2025

# INDONESIA

Colombo, 15<sup>th</sup> January, 2025

Prepared by:

Prepared for:



Total Population 2022

**275.77 million persons**

Population (% annual change) 2022

**1.2 %**

Labor Force 2022

**143.72 million persons**

GDP at current prices 2022

**19,588.45 trillion Indonesian  
Rupiah**

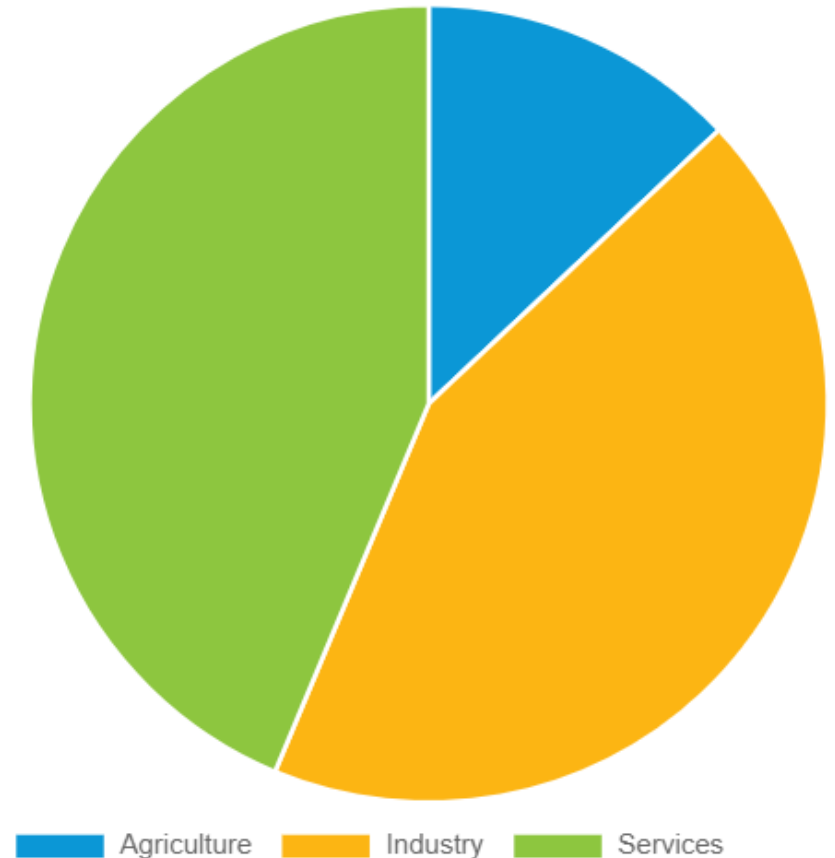
GDP (% annual change) 2022

**5.3 %**

CPI (% annual change) 2022

**4.2 %**

The **Republic of Indonesia** is a transcontinental unitary sovereign state located mainly in Southeast Asia, with some territories in Oceania with a total population of **276m** inhabitants, living in **17,599** Islands spread into **37** provinces, **514** cities.



# INDONESIA MAP

## INFOGRAPHIC



1

**SUMATRA**

Lorem ipsum dolor sit amet, consectetur adipiscing elit, sed diam nonummy nibh

2

**JAVA**

Lorem ipsum dolor sit amet, consectetur adipiscing elit, sed diam nonummy nibh

3

**KALIMANTAN**

Lorem ipsum dolor sit amet, consectetur adipiscing elit, sed diam nonummy nibh

4

**BALI**

Lorem ipsum dolor sit amet, consectetur adipiscing elit, sed diam nonummy nibh

5

**SULAWESI**

Lorem ipsum dolor sit amet, consectetur adipiscing elit, sed diam nonummy nibh

6

**MALUKU**

Lorem ipsum dolor sit amet, consectetur adipiscing elit, sed diam nonummy nibh

7

**PAPUA**

Lorem ipsum dolor sit amet, consectetur adipiscing elit, sed diam nonummy nibh

# DISTRIBUTION OF ARCHITECT AND MEMBER OF IAI

Per 31 Januari 2024

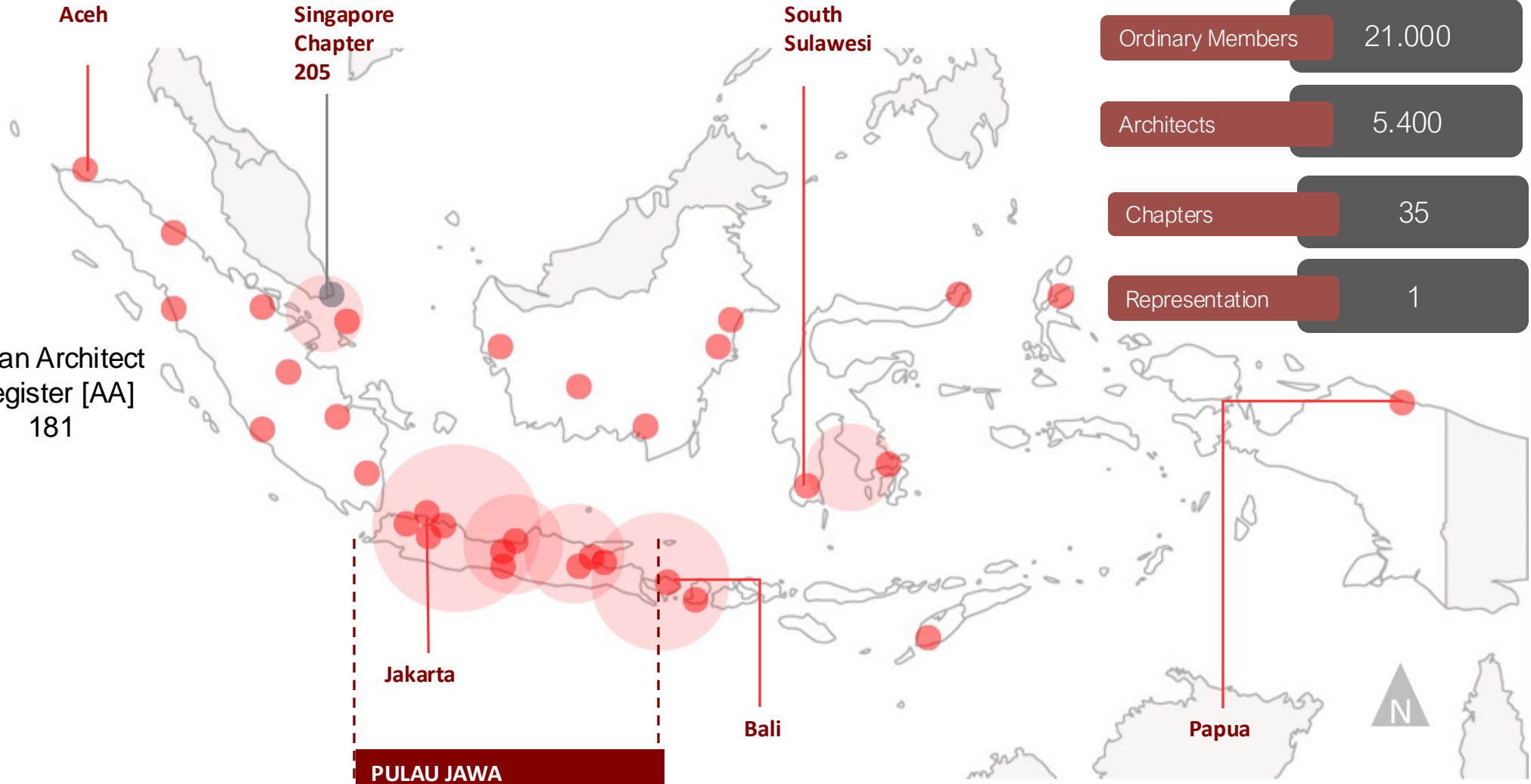
IAI merupakan Anggota dari :



Asean Architect Register [AA]  
181



APEC Architect



**PULAU JAWA**  
±11,900 Members  
(53.34 %)

Total Members 27.600

Ordinary Members 21.000

Architects 5.400

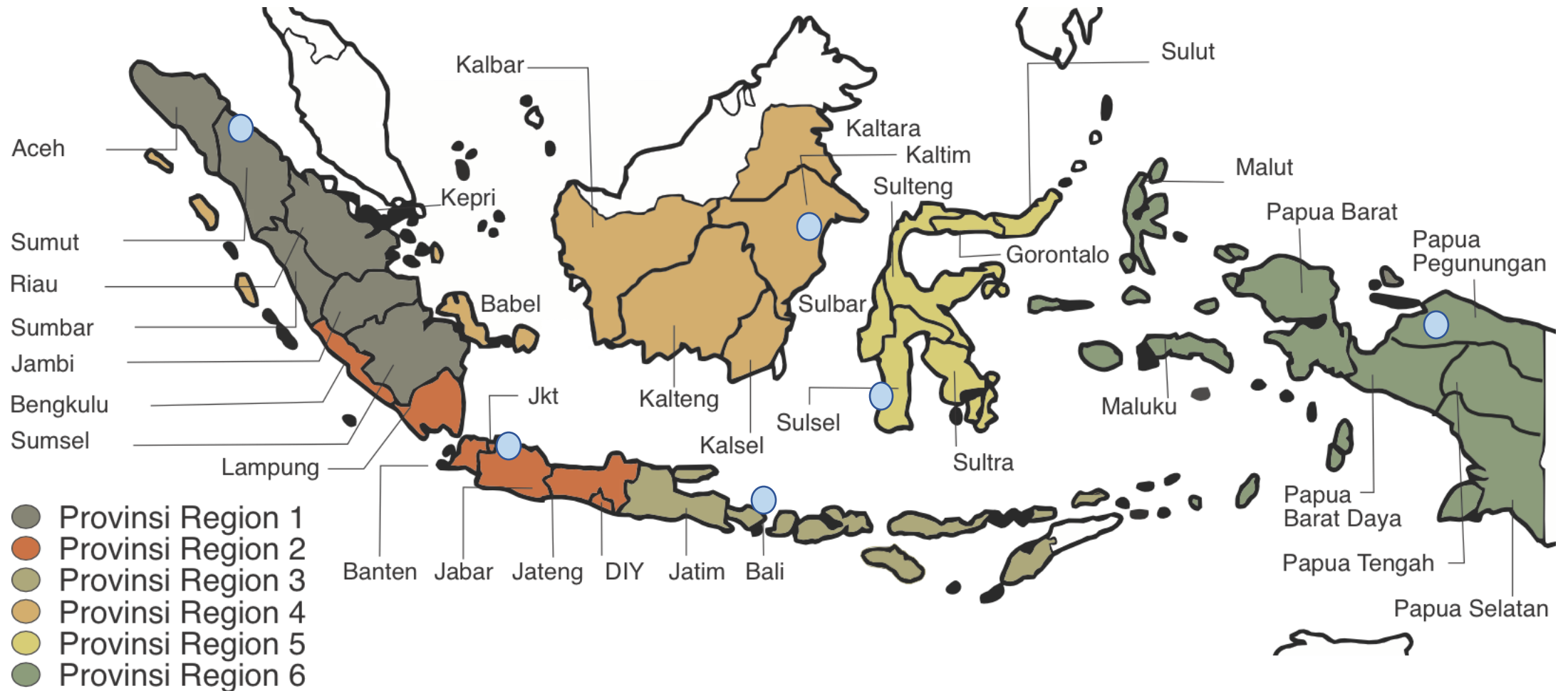
Chapters 35

Representation 1

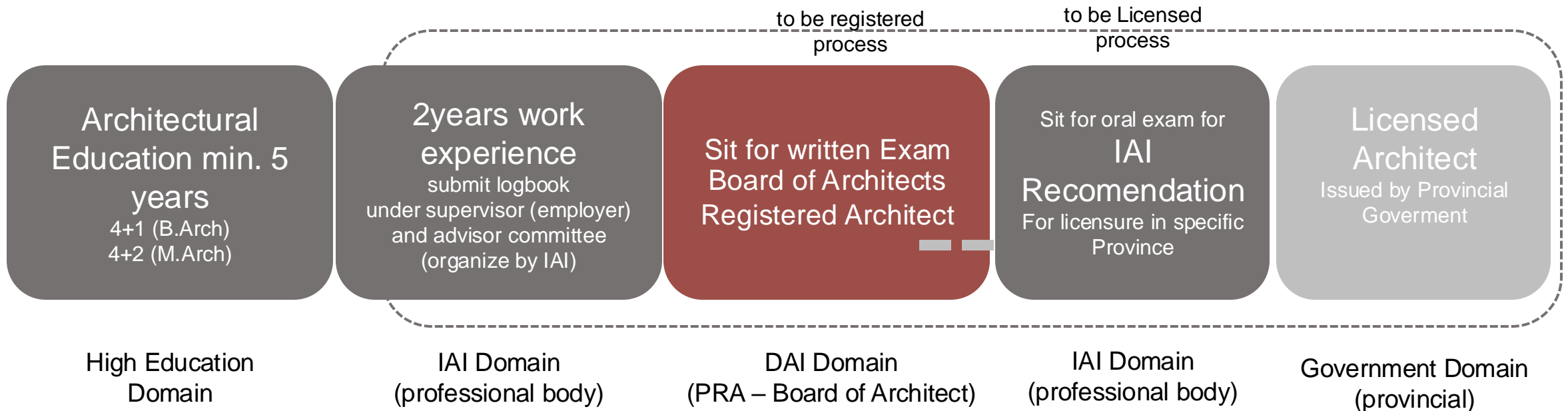


# IAI Region MAP 2024-2027

For Services



# Stages to be Professional Architect



177 architecture schools

CPD 200 points / 5 years

# INDONESIAN INSTITUTE OF ARCHITECTS

## IKATAN ARSITEK INDONESIA (IAI)

- The Indonesian Institute of Architects / Ikatan Arsitek Indonesia ( IAI ) is the only professional organization of architects in Indonesia stated by the Indonesian Architect Act 2017. Its principal role is to promote the social and legal status of architects in Indonesia and to protect & develop the sustainability Indonesian architecture.
- IAI represents Indonesia Section in the **International Union of Architects ( UIA )** as a full member and has been a member of the **Architects Regional Council Asia (ARCASIA)** since 1977.



- Date of Establishment **17 September 1959**
- Name of President **Ar. Georgius Budi Yulianto, IAI, AA**
- Number of Member **27.600 (by January 2025)**
- Number of Reg. Architects **5.400 (by January 2025)**
- IAI has 35 Chapters in the whole 37 Indonesian Provinces and 1 Representative Chapter in Singapore



# INDONESIAN BOARD OF ARCHITECTS

## DEWAN ARSITEK INDONESIA (DAI)

- **DAI was inaugurated by the Minister of Public House and Public Housing on 3rd December 2020**
- **Legal Foundation:**
  - Law no 6/2017 on Architects
  - PP no 15/2021 concerning the Implementation of the Architecture Law
- **DAI's vision is that professionals can carry out organizational activities with aspirational leadership** in order to make the organization a leader in ethical and responsible architectural practices for the realization of professional, innovative, competitive and caring architects.
- **DAI's mission is to continue to maintain the integrity, commitment, and competence of members in organizational development** through programs that benefit members and the community as well as restructuring organizational governance through the principles of planning, accountability and transparency and optimizing the potential of members in the context of organizational regeneration and regeneration by prioritizing its work programs.



DEWAN  
ARSITEK  
INDONESIA

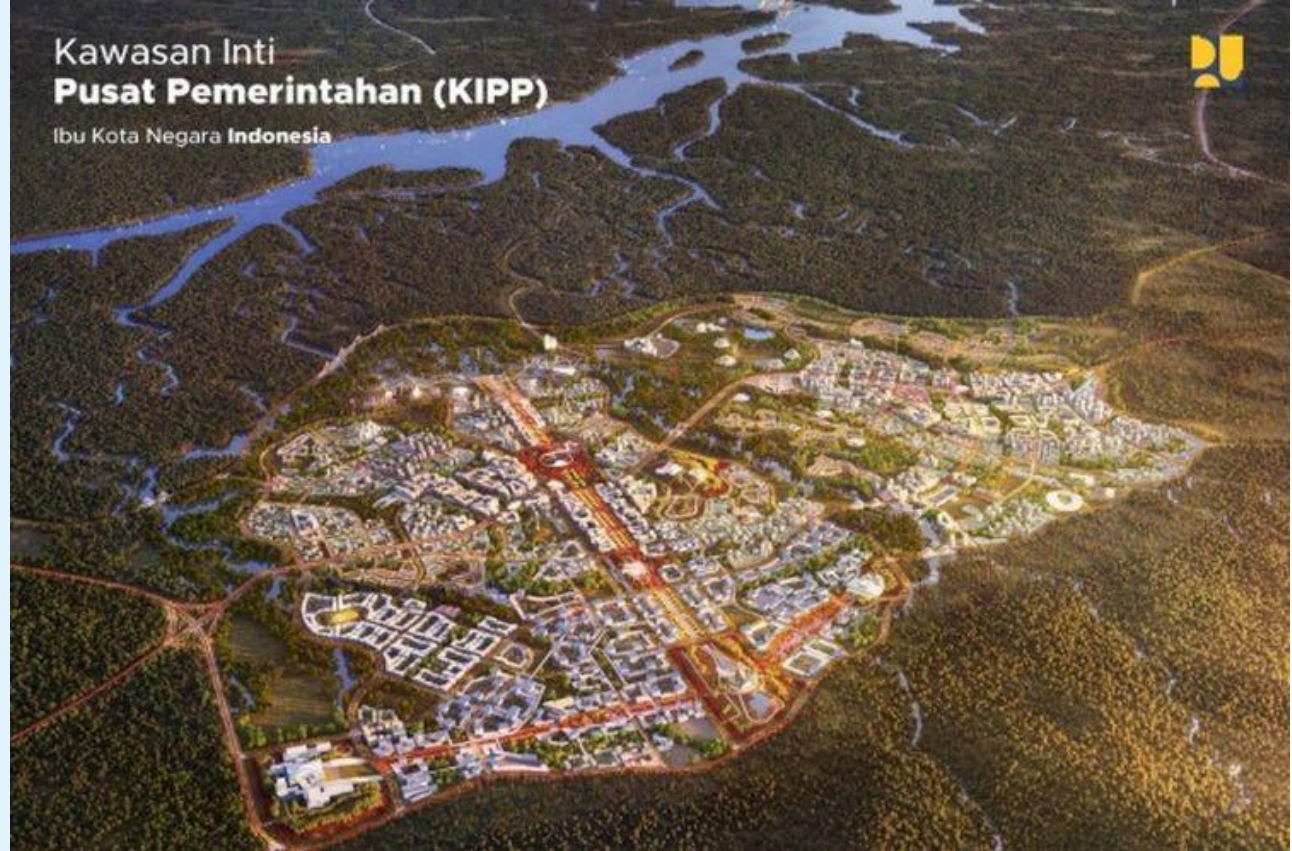
*Indonesian Board of Architects*



# ARCHITECTURE EDUCATION IN INDONESIA

- There are **177 architecture schools in Indonesia**, 102 of them are members of APTARI (Indonesian Association of School of Architecture / IASA). **Indonesia follows the 5 years architecture education program** to meet the UIA standards.
- 10 already has 5 years programs, 36 are qualified and in the process of opening the 5 years programs.
- IAI is working with DAI and the government for Educational Equivalency Program, to acknowledge 4 years work experience portfolios as an equivalency for 1 year additional education. **The program is only temporary will end at 2025.**
- IAI is initiating **Indonesian Architectural Education Board**, together with Board of Architects and Architectural Higher Education Association, **targeted to be operational in 2024.**



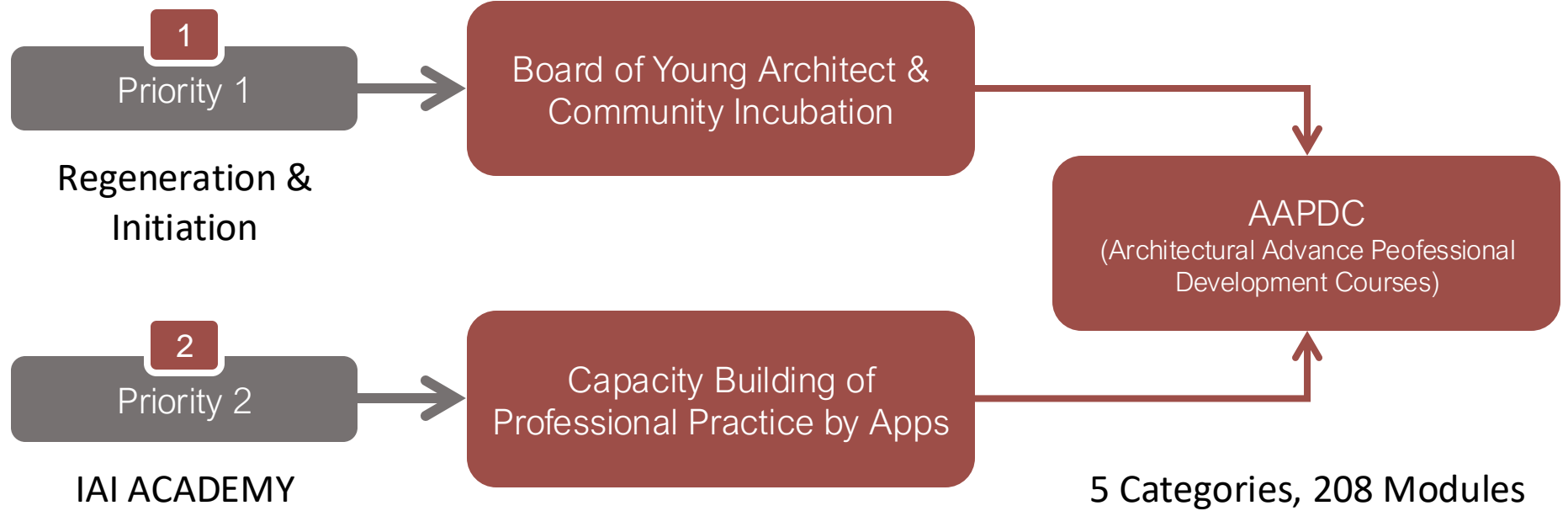




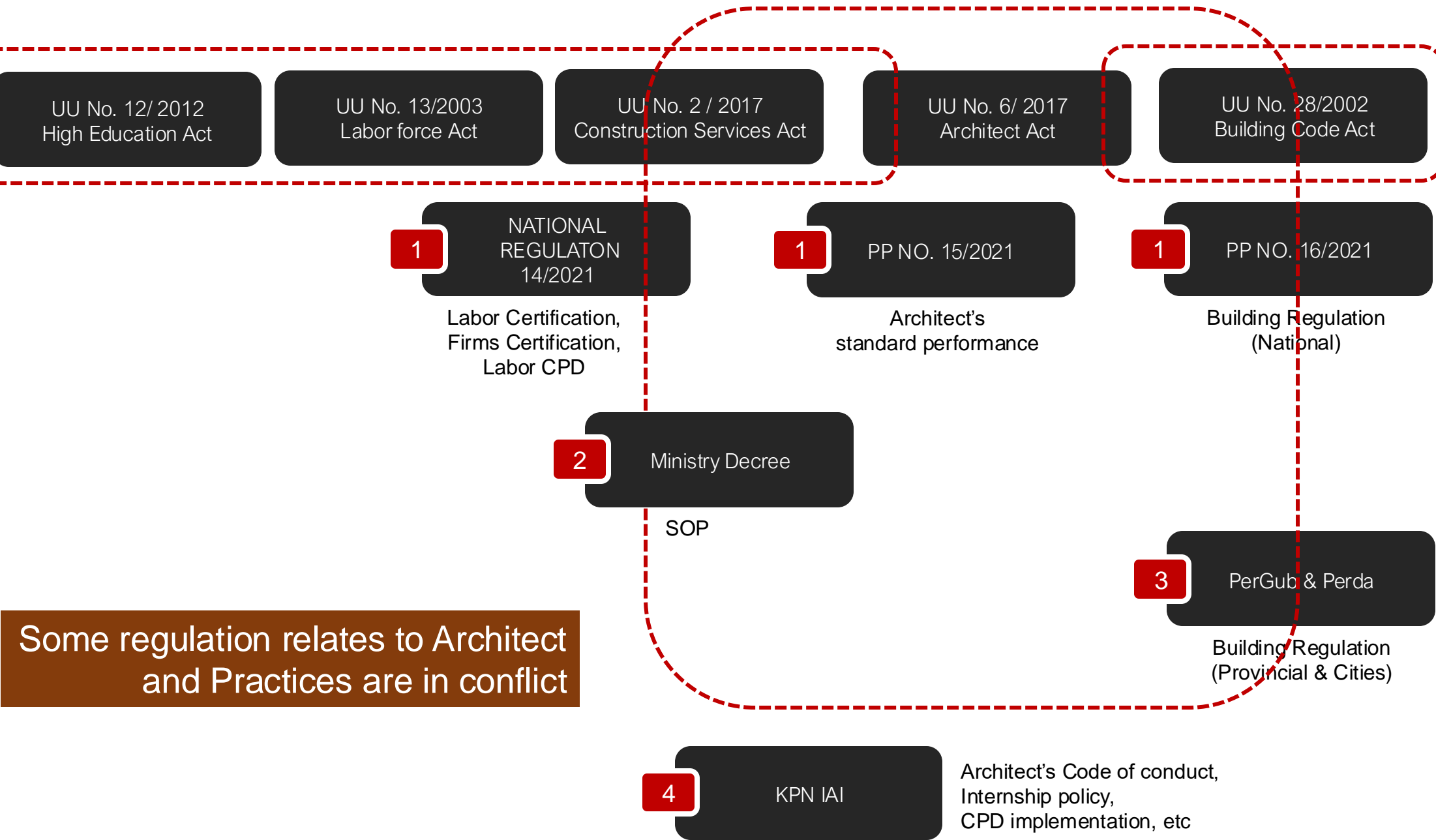
# ASEAN ARCHITECT CONGRESS 2023



# IAI's Priority on Professional Practice



- 1 MA Management & Professional Practice
- 2 MB Building Types
- 3 MC Masterplanning
- 4 MD Conservation
- 5 ME IA as Professional Tools





House of Representatives Hearing  
19 September 2023

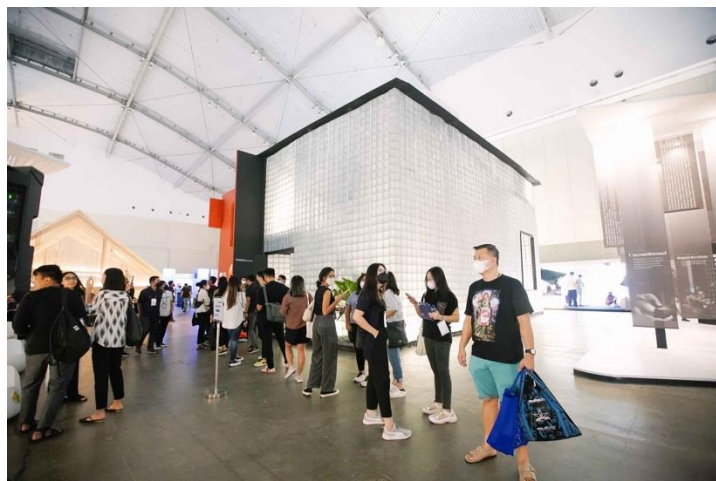
# AGM/CONGRESS OF THE INSTITUTES

- IAI Congress in every 3 years
- At least once a year, Annual Chapters Executives Meeting held in cities among chapters



# IAI REGULAR EVENTS

- The biggest Indonesian Architects Convention and Exhibition - **ARCH:ID**



# IAI REGULAR EVENTS

- INTERNATIONAL EVENT :

- Four Nations Meeting :

March 17 2023 : host IAI, along with the ARCH Event. ID.

- Talk Shows & Exhibitions:

ARCH.ID 16 March 2023:

Talk show 'CARBON-NEUTRAL TOWARDS: THE 4 NATIONS EXPERIENCE



# INDONESIAN INSTITUTE OF ARCHITECTS

## IKATAN ARSITEK INDONESIA (IAI)



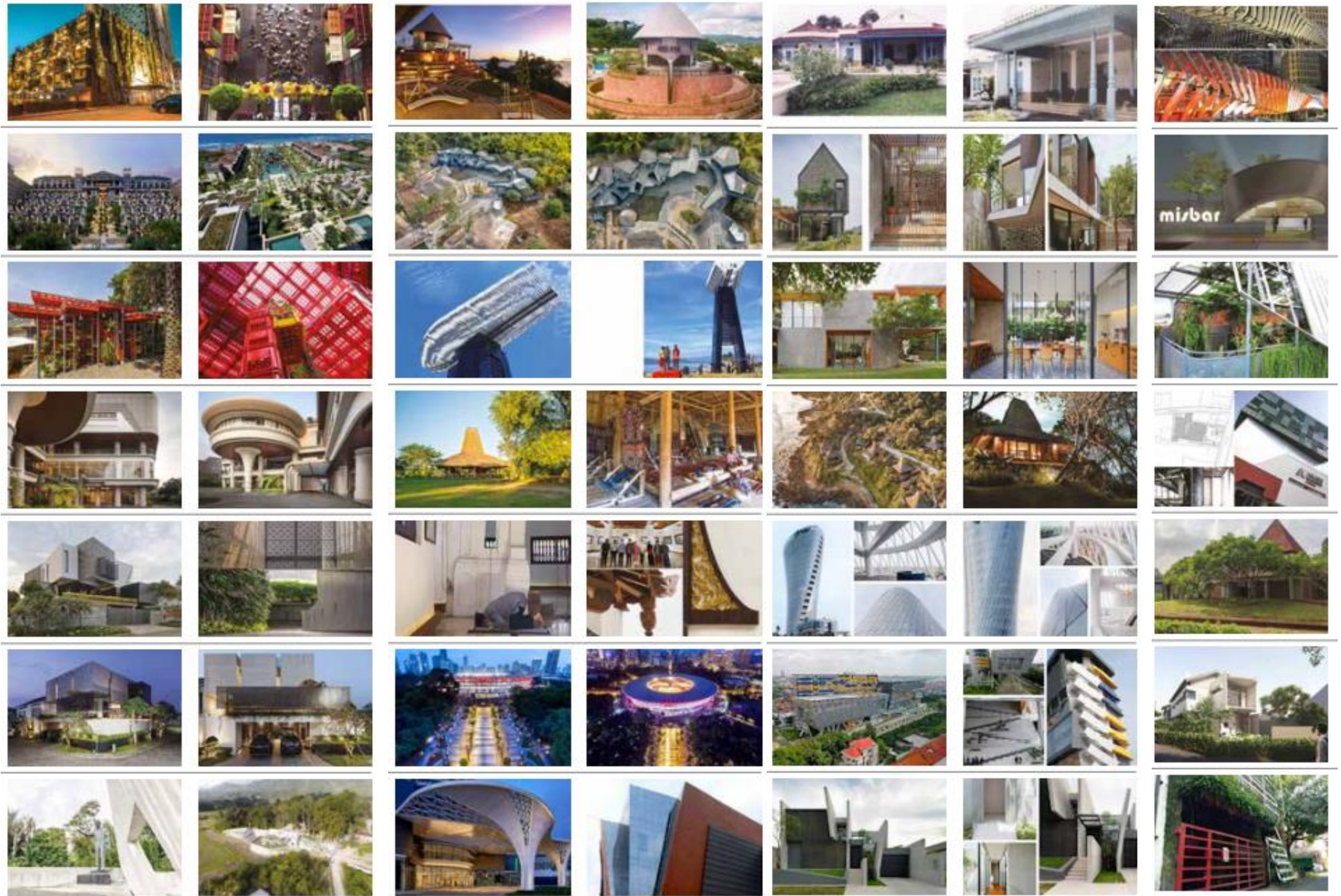
### COMPETITION

- The Indonesian Institute of Architects has an architectural competition standard that has been compiled for several years and is always updated. With this regulation, the holding of an architectural contest is expected to provide maximum results for the owners or stakeholders in finding architectural ideas / designs that best suit the needs of the country.

### AWARD

- Giving appreciation to the work of Indonesian architects and the community of interest in the field of Architecture, IAI has develop the tradition of IAI Award. This activity has been going on since the 1980 IAI Council and continues to be carried out until now.

COUNTRY REPORT | INDONESIA  
IAI AWARD PARTICIPANTS



# INDONESIAN INSTITUTE OF ARCHITECTS

## IKATAN ARSITEK INDONESIA (IAI)

### DISASTERS

- Indonesia is a supermarket of disasters.
- In emergency situations, IAI Architects helped the recovery in effected areas through architectural assistance. IAI architects helped create an easy conception of the design of temporary shelters for refugees. In Rehabilitation and Reconstruction phase, IAI works in coordination with The Ministry of Public Works and Housing of The Republic of Indonesia.



Hunian sementara (huntara) di Dusun Sudimoro, Adikarto, Muntilan, Magelang, Senin (25/4)

source: [www.antarafoto.com](http://www.antarafoto.com)

# IAI POST-MAJOR PROGRAMMES



## AA CONGRESS 2023 (MAKASSAR)

# KEY ISSUES and immediate challenges for ARCHITECT PROFESSION & IAI

- The transition of PRA, amending laws and regulation  
Certification, Registration & License, CPD
- IAI Satu Data.  
IT System to support database of member, portfolios, CPD data and activities, (work experience) logbook, internship advocacy, etc., as a basis for future development of institute, member and public services.
- International cross-border for legal architecture practices in Indonesia  
Incl. contract standard including product and insurance standard, fee standard and best practices.
- IAI target by 2024  
6000 registered Architects,  
30 running 5years program architecture education,  
An established an recognized CPD system & activities



Prepared by:



IKATAN  
ARSITEK  
INDONESIA

Prepared for:



arcasia  
Architects Regional Council Asia

## EXTERNAL REFERENCES

- [1] [www.constructionplusasia.com](http://www.constructionplusasia.com)
- [2] [www.kabarbanten.com](http://www.kabarbanten.com)
- [3] <https://www.bps.go.id/indicator/12/1975/1/jumlah-penduduk-pertengahan-tahun.html>
- [4] <https://ice-indonesia.com/en/gallery/arch-id>
- [5] [www.antarafoto.com](http://www.antarafoto.com)
- [6] <https://www.bps.go.id/statictable/2014/02/18/1276/persentase-penduduk-daerah-perkotaan-menurut-provinsi-2010-2035.html>
- [7] [www.rm.id](http://www.rm.id)
- [8] <https://iai.or.id>
- [9] <https://indonesiadesign.com/story/booth-designs-at-arch-id-2022>
- [10] <https://www.bps.go.id/indicator/12/1976/1/laju-pertumbuhan-penduduk.html>
- [11] <https://www.bps.go.id/indicator/12/1886/1/jumlah-penduduk-hasil-proyeksi-menurut-provinsi-dan-jenis-kelamin.html>

# THANK YOU!