



**ARCASIA FORUM 22 COLOMBO-SRI LANKA**  
**14-18 January 2025**

# The Implementation of <sup>24</sup> SDG goals by architects in their practices

**ALACE COUNTRY  
REPORT**

**20  
24**


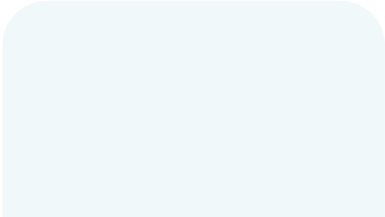

**10-16 JUNE 2024**  
TIME: 09:00-19:00 | FREE  
LOCATION: LAO-ITECC Convention Hall



**ALACE  
EXPO '24**  
Association of Lao Architects and Civil Engineers  
EXHIBITION | ANNUAL MEETING | FORUM



# Content

- 2024's Overview
  - Challenges faced
  - Strategic Initiatives
  - Significant achievement
  - Future goals
- 
- 
- 



# 2024 overview

The activities undertaken by ALACE in 2024 remain aligned with and contribute towards the realization of the organization's vision which are:

***Be a Center / Be competitive / Build consolidation / enhance connectivity / toward Civilization***

the outstanding core that we have achieved in 2024 is

**BE A CENTER:** ALACE has been striving to establish a clearer public identity. This has been achieved through a series of meetings and the dissemination of regulations to both central and provincial members. The organization of technical seminars, in collaboration with various stakeholders, has highlighted the association's potential to serve as a crucial hub for supporting and finding solutions to challenges faced in the fields of architecture and engineering

**ENHANCE CONNECTIVITY:** The association's activities toward its members and fellow professionals are characterized by a strong emphasis on the involvement of committees and members as driving forces. This approach aims to foster creativity and provide a platform for young professionals to actively participate in professional development and ensure its sustainability.

Overall, the tangible outcomes of the 2024 activities have been the creation of new possibilities in the profession and the strengthening of the internal organization to drive the development of human resources, education, and career guidance for the future

# Challenges Faced

Internal Challenges:

**1 Economic constraints:** ALACE still facing the Limited financial resources which continually constrain the ability to invest in advanced technologies, training, and collaborative initiatives.

**Lack of a robust framework for ethical and competent professional practice.** This framework should encompass:

- Licensing and Registration
- Developed and Updated Codes of Ethics and Professional Conduct
- Mandatory Continuing Education
- Professional Liability Insurance

The absence of these crucial elements poses a significant risk to public safety and the integrity of the built environment.

External challenges:

**2 Education:** the long-term health of industry lies in the declining number of educators at universities, institutes, and schools. This shortage of qualified faculty will inevitably impact the future workforce by hindering the development of a skilled and knowledgeable talent pool.

**Climate change (SDGs):**

- Extreme weather events: Increased frequency and intensity of storm, floods, and wildfires necessitate more resilient and adaptable designs.
- Resource scarcity: Impacts on the availability and cost of construction materials.

**Technology disruption (SDGs):**

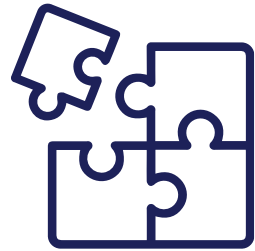
- Automation and AI: Displacing human labor in certain areas of construction and engineering.
- Digitalization: The need for architects and engineers to adapt to new technologies like Building Information Modeling (BIM), virtual reality, and artificial intelligence

# Strategic Initiatives



1

Promote The implementation of regulations requiring Laotian architects and civil engineers to be officially registered and licensed aims to bring all architects and engineers into a regulated system



2

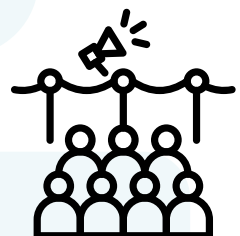
Policies and strategies to create a sub-community within the field, such as creating events, competitions, awards, workshops, field trips, studio visits, etc., with the following objectives:

- Increase revenue generation and self-reliance through proposal writing, sponsorship acquisition, and partnerships.
- Create a platform for the younger generation to showcase their work and creativity, fostering a competitive spirit for continuous creation.



3

Collaborating with educational institutions to align and enhance curricula: By working closely with educational institutions, we can ensure that the curricula for architecture and engineering programs are updated to reflect the current needs of the construction industry and society. This will lay the groundwork for producing highly skilled professionals who can contribute meaningfully to the development of our communities



4

Creating new and creative forms of advertising and communication to attract young architects and engineers, providing them with access to information, enabling them to create creative content, and educate the general public

# Significant activities has been done in 2024

## Conference & EXPO

- Host 1 annual expo : ALACE UNLOCK  
10-16 June 2024
- open annual conference  
10 June 2024
- participate in National Urban Forum 3  
9 December 2024

## Seminar / panel discussion / talk

- Host 10 panel discussions
- Host 4 seminars
- co-host 4 seminars
- participate in 2 seminars as panelist

## internal and external relation

- MOU signed with 2 universities
- Attended ASA at Bangkok Thailand and ASA ESAN

## organization strengthening

- set up the permanent office for ALACE
- yearly meeting of ALACE Luangprabang
- Yearly meeting of ALACE Champassak
- co-host the public consultation with Council Lao architect and civil engineer in difference provinces on Professional license and related law.

## 01: ALACE EXPO 24'

### A comeback of ALACE annual event (conference and ) EXPO with A theme " UNLOCK"

This year's ALACE EXPO, themed "UNLOCK," will focus on equipping professionals in the architecture and civil engineering industries with the knowledge and tools to navigate the challenges of this decade. The event will serve as a platform to launch, discuss, and understand the latest standards, regulations, and laws impacting the industry.



**UnLock**  
The Unknown

**UnLock**  
The Unclear

**UnLock**  
To the Unity

**UnLock**  
The Upside



Every positive change begins with individual initiative. We believe that UNLOCK can be a catalyst for personal and professional growth. We invite you to be a part of this transformative movement. Join us at ALACE EXPO 24: UNLOCK and together, let's unlock the potential of Lao architecture and engineering!

#### **Activities:**

**6 panel discussions : 200+ attendees**

**6 talks/seminar: 300+ attendees**

**4 workshops: 160+ registration**

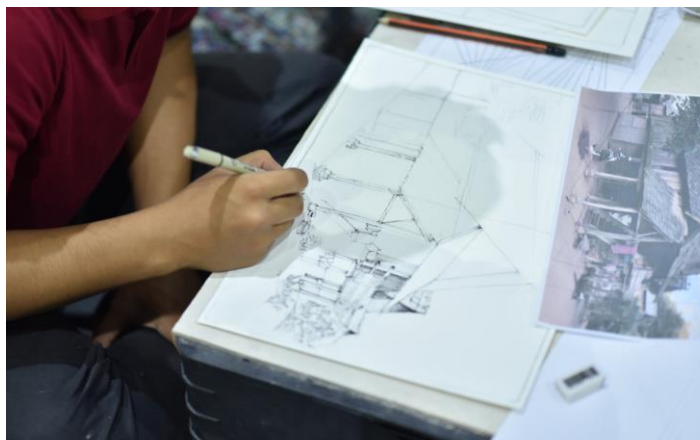
**1 networking night**

**1 mini concert**

## 01: ALACE EXPO 24'



**workshop**



**talk/seminar**



**panel discussion**



### Key achievement:

Participants:

Visitors: 20,000+ . Exhibitors: 80+ booths

by this event we can :

- create Platform for Creativity: Expositions provide a platform for architects, designers, and students to showcase their innovative designs, ideas, and projects.
- Promoting Emerging Trends: Expos can highlight cutting-edge architectural trends, technologies, and sustainable practices.
- Inspiring Future Generations: Expos can inspire and educate the public, particularly young people, about the importance of architecture and design in shaping the built environment.

## 02: Annual conference

Main focus:

Report and reflect on the pending mission of ALACE throughout the year.

officially communicate to members about professional licensing and registration exchanging and hearing the experience from neighbors from: Thailand, Vietnam, Singapore, Malaysia.

Key achievement

- Fostering Collaboration and Networking: Connecting Professionals: this conference bring together architects, engineers, builders, and other industry professionals within Lao and region facilitating networking, knowledge sharing, and collaboration.
- Building Relationships: opportunities to connect with potential partners, investors, and collaborators.
- International Exposure: connect local architects with global trends and opportunities



## 03: National Urban Forum 3 (SDGs Achievements)

### Main focus

Urban development is a critical image for the socioeconomic development of many countries around the globe. ALACE is an active organization involved in micro to macro scales in urban and rural development in Lao PDR. The National Urban Forum 3 is an essential event in pursuing Architects and related sectors to play an important role in SDGs



## Conference & EXPO

### Key Achievement

- Knowledge exchange: Sustainable and livable cities would be an insight goal for a new generation, and SDGs would be achieved from the educational sector to the practical firms.
- SDGs awareness: Young architects and civil engineers can participate in achieving SDGs in Lao PDR.

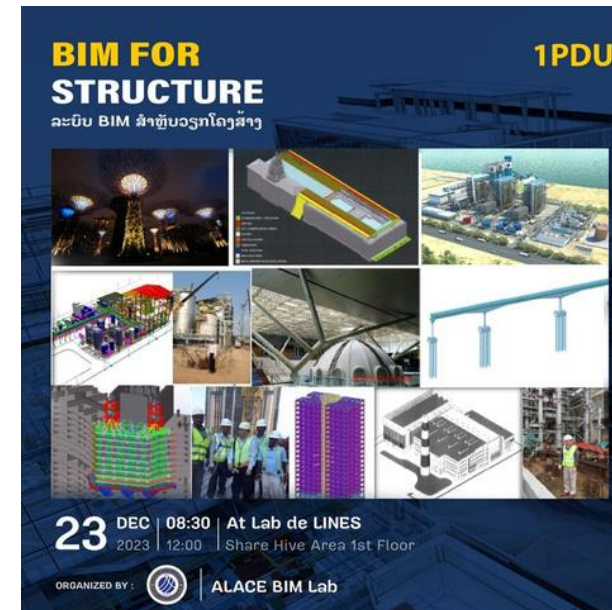
## 01: ALACE BIM LAB

### Main focus

BIM has nowadays become an indispensable tool in modern architecture and engineering.

The ALACE BIM LAB was established in late 2023 by a group of young architects and engineers to foster a community that promotes the importance and benefits of BIM in design and construction management within the SDGs.

A key objective of the lab is to integrate BIM principles into Continuing Professional Development (CPD) programs, thereby equipping Laotian designers with the knowledge and skills necessary to meet international industry standards

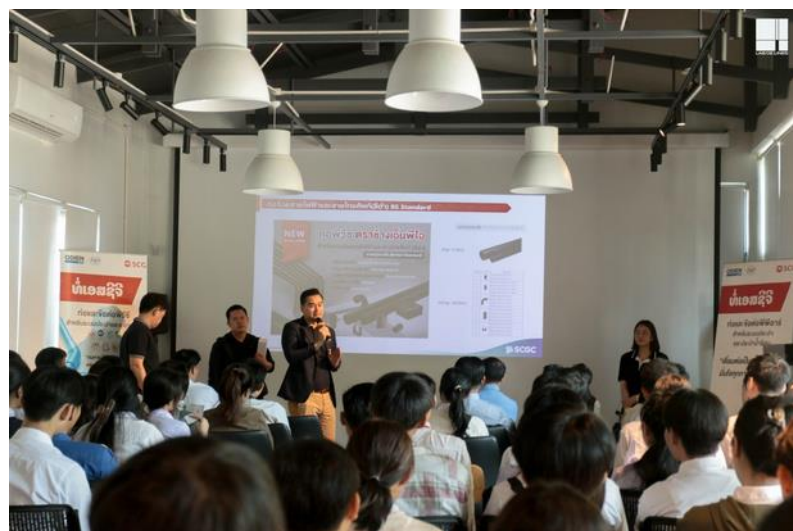


### Key Achievement

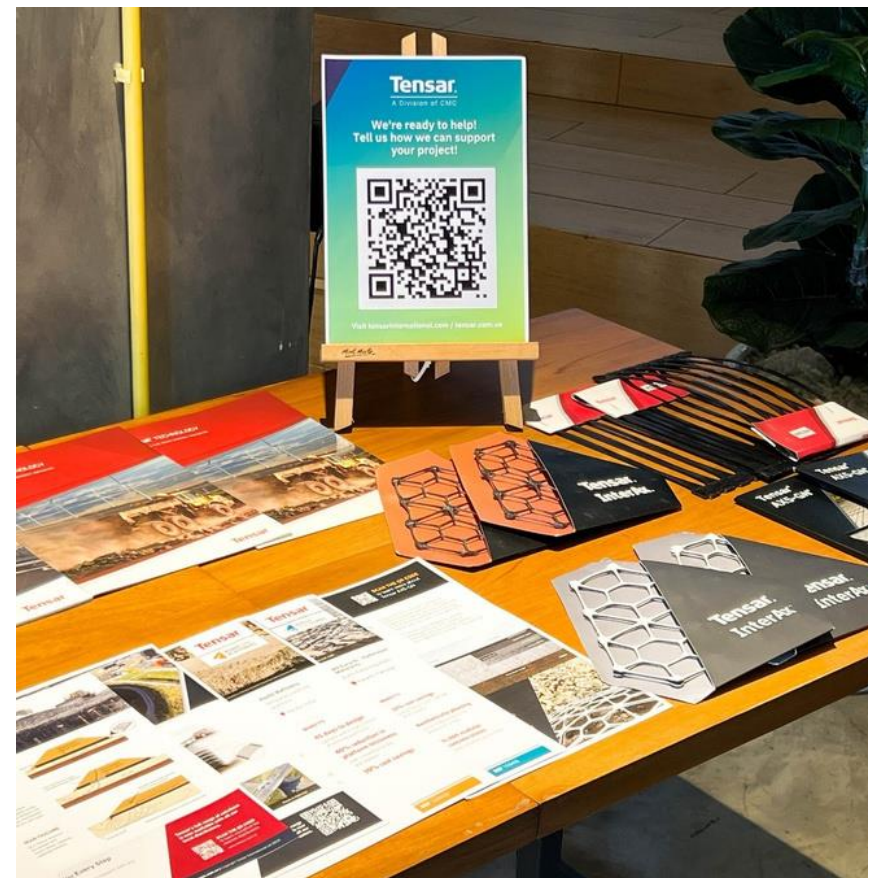
- Skill Development: Fostering a community of BIM practitioners will lead to a significant improvement in the skills and expertise of Laotian architects and engineers.
- Knowledge Sharing: The community will facilitate knowledge sharing, best practice dissemination, and the development of industry-wide BIM standards and guidelines.
- Increased Competitiveness: By enhancing the skills and capabilities of local professionals, the BIM Lab will contribute to increased competitiveness in the regional and international construction markets

## 02 Material innovation

Architecture



Civil Engineering



talk/workshop



**Goal 9:** Build resilient infrastructure, promote inclusive and sustainable industrialization and foster innovation

### Key Achievement

talks and seminars on material innovation and engaging in active knowledge sharing, architects and engineers can significantly enhance their professional skills, improve project outcomes, and contribute to a more sustainable and innovative built environment.

- Stay Current: Keep abreast of the latest advancements in materials science and construction technology.
- Expand Knowledge Base: Broaden professional knowledge and expertise in a rapidly evolving field.
- Networking Opportunities: Connect with other professionals, share experiences, and build valuable industry relationships.

03: Seminar on the SDGs Achievements



Topic: Solution to Vientiane's flooding issue **SDG13 & 14**

04: knowledge sharing



Topic: Gender Equalities, Disabilities and Social Inclusion in Infrastructure **SDG5, 9 & 10**

Topic: Life , work and contemporary architect (Sustainable Communities) **SDG11**

## 01: MOU



MOU with University of Champassak



MOU with Souphanouvong University

Main focus:

Enhance Industry-Academia Collaboration:

- Aligns academic programs with the evolving needs and demands of the industry.
- Joint Research and Development: Facilitates collaborative research projects between industry professionals and academic researchers, leading to innovative solutions and advancements.
- Provides access to the latest research, academic insights, and expertise available within the educational institution.

Improve Professional Development:

- Offers access to a wider range of professional development courses, workshops, and seminars for industry professionals.
- Faculty Exchange Programs: Enables faculty members to gain industry experience and bring real-world insights into the classroom.
- Mentorship and Internship Programs: Provides opportunities for students to gain practical experience through internships and mentorship programs with industry professionals.

## 02: International event and stage



Another significant achievement for ALACE: Mrs. Saykham Thammanosout was elected Vice President of Zone B of ARCASIA on January 21st, 2024, during the organization's meeting held in Indonesia



### ASA



Participated ASA expo and ASA ESAN 2024

## 01: set up permanent office



## Organization strengthening

Another significant of ALACE to finally capable to set up the permanent office, this will benefit:

### 1. Long-term Sustainability:

- Improved Financial Stability: A permanent office can enhance fundraising efforts and attract sponsorships.
- Enhanced Organizational Structure: Provides a stable foundation for the long-term growth and development of ALACE.

### 2. Enhanced Visibility and Professionalism

- Increased Credibility: A physical office space enhances ALACE's credibility and professionalism in the eyes of members, stakeholders, and the public.
- Improved Public Image: A dedicated office space strengthens ALACE's presence within the architectural and engineering community.
- Professional Image: Provides a professional and welcoming space for meetings, workshops, and events.

02: continue developing network among ALACE in other provinces throuout the country



Conferences to disseminate regulations and the importance of professionalism in each province have been continuously held and have been very successful. It is noticeable that we can gather members from each province and have a stronger community

# Future Goals

1

ALACE aims to develop and collaboration expand to be able to launch the first comprehensive package of tools and resources (Licensing and Registration, Codes of Ethics and Professional Conduct, Mandatory Continuing Education, Professional Liability Insurance) within 2025.

2

ALACE AWARD:

In 2025, ALACE will host an awards ceremony to recognize the outstanding achievements of professional architects and engineers

3

ALACE EXPO 25'

with an aim to engage more and more stakeholders with more innovation concept.

4

Encouraging Lao architects and engineers to play a crucial role in national and international collaborations for the SDGs achievements

# Thank you



NSF  
ALACE