



asa



COUNTRY REPORT 2025

**BY
THE ASSOCIATION OF SIAMESE ARCHITECTS UNDER ROYAL PATRONAGE (ASA)**

**ARCASIA 2025
THE 21ST ASIAN CONGRESS OF ARCHITECTS
INCHEON , KOREA
SEPTEMBER 8 - 12, 2025**



asa The Association of Siamese Architects under Royal Patronage

ASA FOCUS AREA YEAR 2025

1. ARCHITECT EXPO 2026 THE ASEAN'S LARGEST BUILDING TECHNOLOGY EXPOSITION 28 APRIL - 3 MAY 2026

The largest construction material trade fair and architecture gathering will be held during 28 April - 3 May 2026 at IMPACT Exhibition Center nearby Bangkok. This will be the 38th edition of the series which is the largest, most complex nationally endorsed annual event dedicated to the architecture, design and development industries attracting over 300,000 visitors and brings together professional visitors from all over the world and 40+ forum speakers to our platform. The event also brings 1,000+ local and international exhibitors to showcase their products and services where over 30% are from overseas. The venue spans over 75,000 sq.m. For further info please visit our official website: <https://www.asaexpo.org>

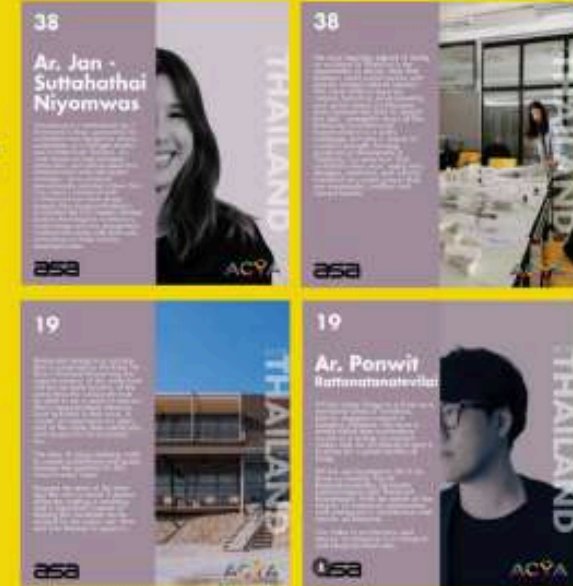


2. KEY ISSUES FACING THE ARCHITECTS, ARCHITECTURAL PROFESSION, AND INSTITUTE

While plenty of architectural firms around the world are deploying digital data with AI in the design process, there should be a long way until AI can generate characteristics like human work. The advancements in technology have effects on architecture in some disciplines. Thus, architects can focus on leveraging AI for generative architecture as a tool to augment practice, replacing mundane tasks. ASA aims to support and inspire architects to coexist with new technology for sustainable development through open forums, contests, and space for creativity and collaborations showcase.

Declining Membership is another key issue facing many Institutes. In order to stimulate participation by current members and provide interest from younger architects who are not members, ASA will formalize the ISA Talk Series to be geared towards Young Architects interests and make it an international event. This will create a platform for Thai architects to be able to present their works at other international events and we encourage ARCASIA to join us and take part in our proposed program.

- Objective : Create a platform for ASA Young Architects to present their designs internationally



4. TOD FOR WHO, WHY THE ASSOCIATION OF SIAMESE ARCHITECTS EMBRACE TOD THROUGH LAND READJUSTMENT

The "Ramkhamhaeng area," particularly in the vicinity of the Orange Line's Ramkhamhaeng 12 Station (OR12), as well as the broader eastern zone of Bangkok, has been undergoing rapid transformation. This shift has been especially pronounced following the implementation of the Orange Line project, which has notably influenced land use patterns and the composition of the residential population.

TOD CONCEPT



TOD For WHO? โพลิศ? ... สมาคมสถาปนิกสยามฯ ดำเนินการริเริ่มพัฒนา ย่านรามคำแหง สถานีรามคำแหง 12 (OR12) ... [Grid of photos showing meetings and events]

3. ASA 2025 ACTIVITIES

ASA EXPERIMENTAL DESIGN EXHIBITION 2025 ... ASA TALK SERIES 01/25 ... TOY Arch 2025 ... A RESILIENT ENVIRONMENTS ... [Grid of posters for various activities]

Topic: Is the professional fees in your country competitive, or determined by market forces?

Fee Schedule for Service Providers in Design or Construction Supervision Contract

No	Type of Work	List	Project Size (Million USD)	Rate (not exceeding a percentage of the construction budget)		
				Not Complex	Complex	Very Complex
1	Architecture Work	Design	not over 1.54	4.5	6.5	8.5
			from 1.54 not over 7.69	4	5.25	7
			from 7.69 not over 23.08	3.5	4	6
			from 23.08 not over 76.92	3	3.5	5
			from 76.92 not over 153.85	2.5	3	4
			from 153.85	1.5	2.5	3
		Construction	not over 1.54	4.5	6.5	8.5
			from 1.54 not over 7.69	4	5.25	7
			from 7.69 not over 23.08	3.5	4	6
			from 23.08 not over 76.92	3	3.5	5
			from 76.92 not over 153.85	2.5	3	4
			from 153.85	1.5	2.5	3

Topic: Is the professional fees in your country competitive, or determined by market forces?

No	Type of Work	List	Project Size (Million USD)	Rate (not exceeding a percentage of the construction budget)	
				Electric Train Project / High-Speed Rail Project	Long-Distance Railway Project / Double-Track Electric Train Project
2	MASSTRANSIT	Design	not over 307.69	2.25	2
			not over 923.08	2	1.75
			not over 1,846	1.75	1.5
			over 3,692	1.25	1
		Construction	not over 307.69	5.5	5
			not over 923.08	5	4.5
			not over 1,847	4.5	4
			over 3,692	3.5	3

Topic: Is the professional fees in your country competitive, or determined by market forces?

No	Type of Work	List	Project Size (Million USD)	Rate (not exceeding a percentage of the construction budget)
3	Airport	Design	not over 3.08	4.5
			not over 30.77	4
			not over 153.85	3.5
			over 307.69	2.5
		Construction	not over 3.08	5
			not over 30.77	4.5
			not over 153.85	4
			over 307.69	3

KEY ISSUES FACING THE ARCHITECTS, ARCHITECTURAL PROFESSION, AND INSTITUTE

While plenty of architectural firms around the world are deploying digital data with AI in the design process, there should be a long way until AI can generate characteristics like human work. The advancements in technology have effects on architecture in some disciplines. Thus, architects can focus on leveraging AI for generative architecture as a tool to augment practice, replacing mundane tasks. ASA aims to support and inspire architects to coexist with new technology for sustainable development through open forums, contests, and space for creativity and collaborations showcase.

Declining Membership is another key issue facing many Institutes. In order to stimulate participation by current members and provide interest from younger architects who are not members, ASA will formalize the ISA Talk Series to be geared towards Young Architects interests and make it an international event. This will create a platform for Thai architects to be able to present their works at other international events and we encourage ARCASIA to join us and take part in our proposed program.

- Objective : Create a platform for ASA Young Architects to present their designs internationally.

38
Ar. Jan - Suttahathai Niyomwas
Growing up in a multicultural city, I developed a deep appreciation for architecture that designs for diverse communities. As a Fulbright Scholar and architect from Thailand, my work focuses on using dialogue, urban data, and cultural research to translate local voices into spatial strategies. I have practiced internationally, including in New York City, where I worked on both architectural and urban design projects. Now based in Thailand, I co-founded the City Connect, leading projects that integrate architecture, urban design, and civic engagement. I collaborate closely with youth and communities to shape inclusive, meaningful cities.

38
The most inspiring aspect of being an architect in Thailand is the opportunity to shape cities that balance rapid urbanization with deeply rooted cultural identity. We work within a layered context, historical, environmental, and social where architecture must respond not only to climate but also, community ways of life. Balancing tradition and transformation is a daily challenge, but also a source of creative strength. Having practiced professionally in Thailand, I've seen how Thai architects often wear many hats: designer, mediator, and cultural translator to create spaces that are meaningful, resilient and vibrant futures.

19
Restaurant design in a location that is connected to the Kwai Yai River (Thailand) Preserving the natural scenery of the waterfront will be our main priority. At the same time, the restaurant must be able to be a point of interest that is appropriately linked to local activities in that area. To create an experience for users and at the same time create jobs and careers for local people too.
The idea of using retaining walls to create architecture and space answers the question for this area in many ways.
Because the level of the land and the river is about 3 meters different, making a retaining wall is important in terms of helping the riverbank not be eroded by the water over time and also helping to support...

19
Ar. Ponwit Rattanatanatevilai
PHTAA Living Design is a fresh and motivated team of architects, interior designers based in Bangkok, Thailand. We have a strong belief that architecture serves as a bridge to connect culture with the architectural detail to strive for a great quality of living.
PHTAA was founded in 2016 by three co-founder Ponwit Rattanatanatevilai, Haisadhi Leelayuwapan and Thanawat Patchimasiri. With the belief of the beauty of sculptural, autonomous and ambiguous in architecture and interior architecture.
Our vision in architecture and interior architecture is to interpret and integrate them into...

ARCHITECT EXPO 2026

THE ASEAN'S LARGEST BUILDING TECHNOLOGY EXPOSITION

28 APRIL – 3 MAY 2026

The largest construction material trade fair and architecture gathering will be held during **28 April - 3 May 2026 at IMPACT Exhibition Center** nearby Bangkok. This will be the 38th edition of the series, which is the largest, most complex nationally endorsed annual event dedicated to the architecture, design and development industries attracting **over 300,000 visitors** and brings together professional visitors from all over the world and 40+ forum speakers to our platform. The event also brings **1,000+ local and international exhibitors** to showcase their products and services where over 30% are from overseas. The venue spans over **75,000 sq.m.** For further info please visit our official **website: <https://www.asaexpo.org/>**



PLAN FOR THE FUTURE

ASA embraces and supports collaborations that shape the future of architectural design and empower professionals to deliver sustainable practices. We have panned out next year plan as follow;

FOUR-NATION

ASA and alliance institutes are looking forward to the next edition of Four-Nation publication where we gather architects' works from 4 countries in a form of e-book.

The Four-Nation member institutes are looking forward to continuing our Live Design Discourse Workshop, where experienced architect mentors collaborate with architectural students across various venues. Each session explores a unique theme, fostering creativity and professional growth in years to come in their future career.

ISA TALK

ASA ISA talk is a part of Career Development Program where content is vital to professional growth where panels with speakers provide current informative knowledge to spark deep discussion and connection.

ASA plans to launch the continuous series of ISA Talk, for instance, Behind the Scene Talk series which reveals fascinating stories behind iconic construction projects

asa isa Li-Zenn

ASA TALK SERIES 01/25

Public Humanities in Architecture

Friday, 4 July 2025 11:30 - 16:00 PM
Venue : Level 3, ASA Auditorium, Rama 9 Rd., Bangkok

Moderator:
Miss Saatchiwanee
Sawatdiawane
Director College Co., Ltd.

Speaker:
Prof. Dr. Philipp Meuser
Berlin/Germany

For More Information:
Tel. 0-2319-6555 Ext. 202
www.asa.or.th

A Registration QR Code

asa isa Li-Zenn Dsign Something PAST-PRESENT PERFECT

ASA TALK

"Thai Pavilion @ World Expo 2025"

วิทยากร

- นายประภากร ภาวนชญา
ผู้ร่วมก่อตั้ง Co-Founder
บริษัท สถาปัตย์ 49 จำกัด
President 49Group
- ดร.นรงค์วิทย์ อารีมิตร
ศาสตราจารย์พิเศษ
บริษัท สถาปัตย์ 49 จำกัด
- นายอุบลกัมป์ นิลสุขเจริญ
ประธานกรรมการบริหาร
บริษัท ไรฟ์เนรม ชำนาญกุล

ผู้ดำเนินรายการ

- นายศุภกร เทพวิชัยศิลป์กุล
ประธานฝ่ายปฏิบัติการ
Dsign Something

วันพุธที่ 30 เมษายน พ.ศ. 2568
เวลา 15:30 - 16:30 น.
ณ ห้องประชุม 4 อาคารเฉลิมฉลอง
อินทผลัม เมืองทองธานี

สอบถามรายละเอียดเพิ่มเติมได้ที่ สำนักงานประชาสัมพันธ์ โทร. 0-2319-6555 ต่อ 202 www.asa.or.th

THANK YOU

CONTACT US

E-mail: foreignaffairs@asa.or.th, Nongluck.p@asa.or.th

website: www.asa.or.th

Phone **+66 2 319 6555**

Address **The Association of Siamese Architect Under Royal Patronage (Head Office)**
248/1 Soi Soonvijai 4, Rama IX Road, Bangkapi, Huay Kwang, Bangkok 10310 THAILAND